

## **Chapter 1: Style and Program Organization . . . . . 1**

Program Organization . . . . .	1
Automatic Generation of Program Documentation . . . . .	3
Module Design . . . . .	4
Libraries and Other Module Groupings . . . . .	4
Multiple header files . . . . .	5
One header does all . . . . .	5
Mixed approach . . . . .	6
Program Aesthetics . . . . .	6
Code paragraphs . . . . .	6
Statements . . . . .	8

## **Chapter 2: File Basics, Comments, and Program Headings 11**

File Basics . . . . .	11
The Comment . . . . .	13
Graphics . . . . .	15
Packing bits . . . . .	16
Letting the Editor Help You . . . . .	17
Beginning Comment Block . . . . .	18
The sections of a heading . . . . .	18
Other sections . . . . .	21
Module Headings . . . . .	21
Function Headings . . . . .	22
When to Write Comments . . . . .	23
Some Comments on Comments . . . . .	24

## **Chapter 3: Variable Names . . . . . 25**

A Brief History of the Variable . . . . .	25
Capitalization . . . . .	27
Names You Must Never Use . . . . .	28

Other Names Not To Use .....	28
Avoid Similar Names .....	29
Consistency in Naming .....	29
Which Word First .....	29
Standard Prefixes and Suffixes .....	30
Module Prefixes .....	31
Special Prefixes and Suffixes .....	31
When You Can Use Short Names .....	32
argv, argc .....	32
Microsoft Notation .....	32
Imaginative Solutions .....	34
Case studies .....	35
The C runtime library .....	35
The UNIX kernel .....	36
The Microsoft library .....	37
The X Windows System .....	37
Variable Declaration Comments .....	38
Units .....	38
Structures and unions .....	39
Long declarations and comments .....	40
Group similar declarations .....	41
Hidden Variables .....	42
Portable Types .....	42
Numbers .....	43
Floating-point numbers .....	43
Hex numbers .....	44
Long integers .....	44

## **Chapter 4: Statement Formatting..... 46**

Formatting the Body of the Program .....	46
Simplifying complex statements .....	48
Splitting long statements .....	48
Splitting and parentheses .....	49
Splitting a for statement .....	50

Splitting a switch statement.....	51
Conditional operators (? :). .....	52
Side effects .....	52
Assignments in other statements.....	55
When to use two statements per line.....	56
Logic and Indentation .....	56
Indentation styles .....	58
Short form.....	58
Braces stand alone.....	59
Braces indented too.....	60
Variations.....	60
How much to indent .....	61
Two Spaces: .....	62
Four Spaces: .....	62
Eight Spaces:.....	62

## **Chapter 5: Statement Details..... 66**

Doing Nothing .....	66
Arithmetic Statements.....	66
Function Headings .....	67
K&R style parameters.....	67
Return type .....	68
Number of parameters.....	69
Passing parameters in globals.....	72
XView style parameter passing .....	73
The if Statement .....	74
if/else chains .....	75
if and the comma operator .....	76
The while Statement .....	76
The do/while Statement .....	77
The for Statement .....	77
Missing parts of for loops.....	77
Overstuffed for loops .....	78
The printf Statement .....	79
goto and Labels.....	80

The switch Statement .....	80
Debug Printing .....	84
Shut up Statements .....	84

## **Chapter 6: Preprocessor..... 87**

Simple Define Statements.....	87
Constant expressions.....	88
#define constants vs. consts .....	88
#define vs. typedef .....	89
Abuse of #define directives .....	90
Keywords and standard functions.....	90
Parameterized Macros.....	91
Multi-line Macros .....	92
Macros and Subroutines .....	94
The #include Directive .....	95
Style for #Includes .....	95
Protecting against double #Includes .....	96
Conditional Compilation.....	96
Where to define the control symbols .....	98
Commenting out code.....	99

## **Chapter 7: Directory Organization and Makefile Style .. 102**

Organizing Your Directories.....	102
The make Program .....	103
Heading Comments.....	103
Customization Information.....	104
Standard targets.....	104
Macro Definitions.....	105
Common macro definitions.....	106
Configurable variables .....	106
Major Targets .....	107
Other Targets .....	107

Special Rules.....	107
Dependencies .....	108
Example .....	108
Common Expressions.....	110
Complexity .....	111
Portability Considerations.....	112
Generic Makefiles.....	112
Conclusion .....	113
<b>Chapter 8: User-Friendly Programming .....</b>	<b>114</b>
What Does User-Friendly Mean?.....	114
Law of Least Astonishment .....	114
Modeling the User.....	115
Error Messages .....	115
The Command Interface .....	116
Help.....	117
Safety Nets .....	117
Accelerators .....	118
<b>Chapter 9: Rules .....</b>	<b>119</b>

## Chapter 8: User-Friendly Programming

So far we've discussed the use of style to make your code clear and easy to read. But style doesn't stop at the printed page. A program is not only edited, debugged, and compiled; it is also used. In this chapter we extend our discussion of style to include how the program appears when it is in use.

### What Does User-Friendly Mean?

As programmers, we encounter a large number of tools, utilities, and other programs. Some are a joy to use, letting us get our work done with a minimum of fuss. Others are a nightmare, with obscure and complex command sets.

What is a user-friendly program? Simply a program that the user considers a friend instead of an enemy.

In the early days of computing, machines cost millions of dollars and programmers cost only a few thousand. Companies could afford to keep several specialists around to translate management requests into language the computer could understand.

For the programmers, the early computers were very user-unfriendly. IBM's OS/360 required the programmer to interface with it using a particularly brutal language called JCL. The commands were cryptic; for example, "copy" was "IEBGENER", and specifying a file could easily take up three to five lines of JCL code.

Over the years, computers have dropped in price, and the cost of programmers has increased. Low prices have meant that more and more people can buy computers. High salaries have meant that fewer and fewer people can afford to pay a full-time programmer to run them.

Software has had to evolve with the times, too. Programs have had to become easier to use in order to accommodate newer, less computer-literate clients.

Today, people with no computer training at all can go into Radio Shack, plunk down \$1000 and walk out with a computer that is faster and more powerful than an early IBM that cost millions of dollars.

### Law of Least Astonishment

For years, people have tried to come up with a set of laws to define what is user-friendly and what is not. Many of them involve complex standards and lots of rules; but the best law that I've seen governing program design is the Law of Least Astonishment: the program should act in a way that least astonishes the user.

#### **Rule 8-1:**

*Law of Least Astonishment: The program should act in a way that least astonishes the user.*

## Modeling the User

Computers intimidate many people. (Those who aren't intimidated tend to become programmers.) Your first step in writing a user-friendly program is to put yourself in the shoes of the user. What does a user want from the system?

Always remember that users have a job to do. They want the computer to do that job their way, with a minimum of effort.

Almost all tasks done by computer were at one time done by hand. Before word processing, there was the typewriter. Before databases, there was the card file. A good program should be designed to emulate a manual task that the user knows. For example, a good word processor lets the user treat it like a typewriter. True, it adds a great many features not found on a typewriter, but at heart it still can be used like a typewriter.

A good example of a program imitating a manual procedure occurred when a business school graduate student was attending a financial analysis class. He noticed that the professor had a set of figures arranged in a neat set of rows and columns on the blackboard. Every time the teacher changed one number, he had to recalculate and write a new set of numbers.

The student figured that a computer could perform the work automatically, so he invented VisiCalc, the first spreadsheet program. Successful modeling brought this observant programmer a million-dollar idea.

## Error Messages

Sooner or later, every user makes a mistake. When that happens, an error message usually appears. Writing a good error message is an art. Care and thought need to go into the creation of these messages.

Examples of poor error messages abound. I once ran a FORTRAN program and was surprised to see the following message at the end of my run:

```
JOB KILLED BY IEH240I
```

So I consulted the book called Messages and Codes (aka The Joke Book), which was supposed to contain a complete list of errors, and it did—for all the codes except the IEH series, which was in the FORTRAN manual. Going to the FORTRAN book, I discovered that IEH240I meant “Job killed by fatal error.” Of course, I knew it was a fatal error the moment it killed my job.

It turns out that the program tried to do a divide by 0, which resulted in a “Divide by 0” message followed by the IEH240I.

Error messages should not be cryptic. The IEH240I code sent me on a wild goose chase through two books, only to wind up where I started.

You cannot expect the user to know computer terminology. For example, a message like this:

```
FAT table full
```

means nothing to most users. “What do I do? Put the computer on a diet?”

Remember that most users are not programmers, and they won't think like programmers. For example, a secretary was having trouble saving a memo and complained to the computer center. "Do you have enough disk space?" asked the programmer. The secretary typed for a second and said, "Yes, I see a message disk space OK." The programmer looked at the screen, and sure enough, there was the message:

```
Disk space: OK
```

After a few files were deleted, the message read:

```
Disk space: 16K
```

and the secretary was able to save the memo.

Sometimes an error message baffles even experienced programmers. For example, I'm still trying to figure out this one:

```
Error: Success
```

Sometimes it is difficult to pick out the error messages from all the other noise being produced by the computer. A solution is to clearly identify error messages by starting them with the word Error:.

A good error message tells the user what's wrong in plain English, and suggests corrective action. For example:

```
Error: Disk full.
```

Delete some files or save the data on another disk.

### ***Rule 8-2:***

*Begin each error message with Error:. Begin each warning message with Warning:.*

The classic IBM PC self test follows this rule, sort of:

```
Error: Keyboard missing  
Press F1 to continue
```

One student programmer who took particular pride in his program created a work with the most interesting and obsequious error message I've seen:

```
This humble program is devastated to report that it cannot  
accept the value of 200 for scale because the base and  
thoughtless programmer who implemented this program has  
thoughtlessly limited the value of scale to between 0.01 and  
100.0. I implore your worthiness to reduce the scale and run  
this miserable program again.
```

## **The Command Interface**

MS/DOS has a very strange command interface. It appears to be built out of bits and pieces stolen from other operating systems, which results in a command language that is far from consistent.



For example, to get rid of a file, you use the command ERASE. But to get rid of a directory, the command is RMDIR. This is one of the many reasons MS/DOS is considered user-unfriendly. The command interface should be consistent. If you are going to use ERASE to get rid of a file, use ERASEDIR to get rid of a directory.

The GNU ispell program is another example of a program with a problem in consistency. This program checks spelling, and when it detects a misspelled word it produces a numbered list of suggested corrections:

```
Misspelled word: Oualline
```

1. Hauling
2. Mauling
3. Pauling

To select a replacement, you just type in the number. Type a 2, and “Oualline” becomes “Mauling.” The problem is that there can be more than 10 suggestions. In such cases, 1 is ambiguous. It can mean 1 or the first digit of 10. So the program forces you to type <ENTER> if you really want to select 1. Let's review the command interface:

To select a word, type its number, unless there are more than 10 displayed and you want number 1, then type the number 1 and <ENTER>.

How much simpler it would be to say:

```
Type the number and <ENTER> .
```

This example demonstrates the main strength of consistency: You don't have to remember very much. With computer manuals consisting of 1000+ pages, you must have consistency or you'll get insanity.

## Help

Early programs were designed to save disk and memory space, not to be user-friendly. It was difficult to get more than code out of them, much less a help screen.

As user-friendly programming has gained acceptance, help systems has improved as well. Today there are help compilers to aid the programmer produce context-sensitive help screens. The compiler also allows the programmer to embed cross-references in the text that let the user jump immediately to a related subject. Finally, there is an index of all topics that the user can search.

Help compilers are available for Borland's compiler and Microsoft's Windows development system. But even without a help compiler, every program needs to provide some help. More complex programs need context-sensitive help. Far too often, help systems are not designed into programs from the start, but instead as “if we have time” projects. This makes programs very unfriendly.

## Safety Nets

Occasionally a user will try to do something that causes permanent damage and loss of data to their system. A user-friendly program provides users with a safety net preventing them from doing something stupid unless they really want to.

For example, if the user tries to write over an existing file, the message:

```
About to overwrite the file START.TXT.  
Are you sure [n]?
```

This gives the user a chance to abort the operation without damage.

***Rule 8-3:***

*Don't let users do something stupid without warning them.*

## **Accelerators**

Some users eventually develop into power users. You know the type—they know every command in the program, have an amazing set of tricks for getting around program limitations, and can quote long passages from the reference manual.

The user interface for the power user is different from that needed by the novice. Many programs provide accelerator keys, which allow the user to perform common commands with a single keystroke. For example, to run a program in the Borland C compiler you must type Alt-R to bring up the run menu, and then R to run the program. Power users can hit Control-F9.

# Chapter 7: Directory Organization and Makefile Style

So far we've only discussed the C program itself. This chapter explores the programming environment, which includes organizing your program files, and the *make* utility, which turns source programs into a finished work.

## Organizing Your Directories

Small programs consisting of only a few files are easy to organize: just stick everything in one directory. But suppose you're an adventurous programmer and decide to write two programs. Do you stick them both in the same directory? No.

Put each program's files in a separate directory. That way you won't have to figure out which file goes with which program. It also keeps the number of files per directory down to a manageable level

### **Rule 7-1:**

*Whenever possible, put all the files for one program or library in one directory.*

Someday you will probably work on a series of programs, like a set of programs to manage a mailing list. There are programs to enter data, check for duplicates, print labels, and generate reports. All of these programs use a common set of low level list functions. You can't put each of these functions in each program directory. Duplicate files are very difficult to maintain. You need some way to share files.

The solution is to turn the list functions into a library. The library goes in one subdirectory while other subdirectories hold the various programs.

Suppose you have all four programs all going to the Library directory for their subroutines. But the Library directory contains both the source and the library file (*MAIL.LIB*) and headers (*MAIL.H*) used by these programs. Having access to all that data can easily confuse things. You need to limit what they can see.

The solution is to have a special directory for libraries and header files as illustrated by Figure 4-2. When a library is built it is “released” by placing it in this directory. The header files are put here as well. This directory contains the public part of the library, while the private part stays behind in the source directory.

The top level directory (*Mailing List*) should be kept free of sources, except for a *Makefile*, *READ.ME*, or other compilation. This makes the files in the top level simple. Adding programs to this level adds unneeded complexity.

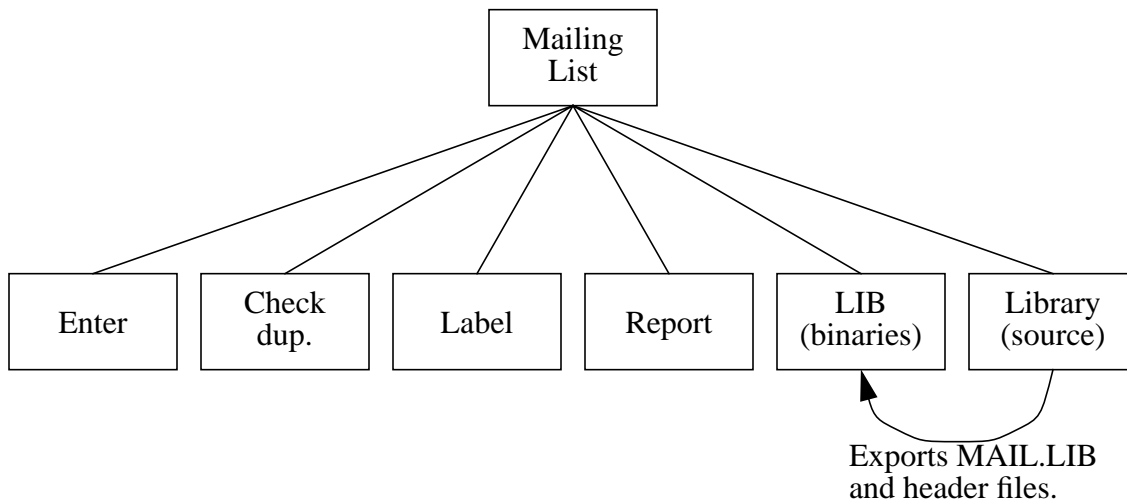


Figure 4-2: Mailing list directory tree

## The make Program

Almost all C compilers come with a program building utility called *make*. It is designed to perform the compilation and other commands necessary to turn source files into a program.

To use *make*, you provide it with a description of your program in a file named *Makefile*. This file also contains the transformation rules that tell it how to turn source into objects.

The *Makefile* is divided into six major sections:

1. Heading comments
2. Macro definitions
3. Major targets
4. Other targets
5. Special compilation rules
6. Dependencies

## Heading Comments

The first things a programmer needs to know when confronting a strange *Makefile* are “What does it do?” and “How do I use it?” The heading comments of your *Makefile* should answer those questions.

The first paragraph of the heading comments explains what the *Makefile* creates. For example:

```
#####
# Makefile for crating the program "hello"      #
#####

#####
# This Makefile creates the math libraries:      #
#      fft.a, curve.a and graph.a              #
#####
```

## Customization Information

Programmers use the preprocessor **#ifdef** to allow for compile time configuration of their program. For example, there might be a debug version and a production version. Or there might be several different flavors, one for each of the various operating systems the program is designed to run on.

The effect of these conditional compilation directives filter up to the *Makefile*. For example, defining the macro CFLAGS as `-DDEBUG` may produce a test program, while the definition `-DPRODUCTION` may produce the production version.

Any configuration information should be listed in the heading comments. This way a programmer can immediately see what customization must be performed on the *Makefile* before he starts to build the program.

For example:

```
#
# Set the variable SYSTEM to the appropriate value for your
# operating system.
#

#   SYSTEM=-DBSD4_3      For Berkeley UNIX Ver. 4.3
#   SYSTEM=-DSYSV       For AT&T System V UNIX
#   SYSTEM=-DSCO        For SCO UNIX
#   SYSTEM=-DDOS        For DOS (Borland Turbo C)
#
```

## Standard targets

The standard form of the *make* command is:

```
make target
```

Here, *target* selects what you want to make. (Microsoft's *make* is a notable exception to this standard.) The programmer needs to know which targets are valid and what they do. Putting a list of targets in the heading provides this information.

For example:

```
#####
# Target are:                               #
#   all - create the program "hello"        #
#   clean - remove all object files         #
#   clobber - same as clean                 #
#   install - put the program in $(DESTDIR) #
#####
```

Over the years a standard set of four targets have developed:

- all* This target compiles all the programs. This is the standard default target.
- install* This target copies the program and associated files into the installation directory. For local commands this can be */usr/local/bin*. For production software, this will be the official release directory.
- clean* This target removes all program binaries and object files and generally cleans up the directory.
- clobber* Like clean, this target removes all derived files—that is, all files that can be produced from another source. In cases where a software control system such as *SCCS* or *RCS* is used, it means removing all source files from the software control system.

*lint* (UNIX systems)

This target runs the source files through the program checker

This list represents the minimum “standard” set of targets. Other optional target names have also come into use over the years.

*depend* or *maketd*

Creates a list of dependencies automatically and edits them into the *Makefile*. There are several utilities to do this, including a public domain program called *maketd*.

- srcs* Checks out the sources from a software control system such as *SCCS* or *RCS*.
- print* Prints the sources on the line printer.
- xrf* Creates a cross reference printout.
- debug* Compiles the program with the debug flag enabled.
- shar* Makes a char format archive. This format is widely used to distribute sources over the Internet and USENET.

## Macro Definitions

The *make* utility allows the user to define simple text macros, such as:

```
SAMPLE=sample.c
```

The macros are used to define a variety of items, such as the source files to be compiled, the compiler name, compilation flags, and other items.

The *make* program predefines a number of macros. (The actual list of Redefined macros varies, so check your manual to see which macros are defined for your version of *make*.)

Each macro definition should be preceded by a short, one-line comment that explains the macro. Also use white space to separate each comment/macro combination.

For example:

```
# The standard C compiler
CC = cc

# Compile with debug enabled
CFLAGS = -g

# The source to our program
SOURCE = hello.c

# The object file
OBJECT = hello.o
```

## Common macro definitions

There are no standard macro definitions; however, the following is a list of the most common:

*CC*           The C compiler

*CFLAGS*       Flags supplied to the C compiler for compiling a single module.

*LDFLAGS*      Flags supplied to the C compiler for loading all the objects into a single program.

*SRCS* or *SOURCES*

The list of source files.

*OBJS* or *OBJECTS*

The list of object files. Some of the newer versions of *make* have an extension that allows you to automatically generate this macro from the *SRCS* macro. For example, the following line tells Sun's *make* that *OBJS* is the same as *SRCS*, except change all the *.c* extensions to *.o*.

```
OBJS = $(SRCS:.c=.o)
```

*HDRS* or *HEADER*

The list of header files.

*DESTDIR*      The destination directory, where the *install* target puts the files.

## Configurable variables

As mentioned earlier, macros are frequently used for configuration information. When it comes to actually defining the variable, it is useful to list all the definitions and then comment all but the selected one. For example:

```
# Define one of the following for your system
SYSTEM=-DBSD4 3      # For Berkeley UNIX Version 4.3
#SYSTEM=-DSYSV      # For AT&T System V UNIX
#SYSTEM=-DSCO        # For SCO UNIX
#SYSTEM=-DDOS        # For DOS (Borland Turbo C)
```

## Major Targets

So far, we've just been defining things. At this point it's time to tell *make* to actually do something. This section contains the rules for all the major targets listed in the comment header. These targets are grouped just after the macros so they can be easily located.

For example:

```
all: hello

install: hello
        install -c hello /usr/local/bin

clean:
        rm -f hello.o

clobber: clean
```

## Other Targets

Often a *Makefile* contains several intermediate or minor targets. These are to help build things for the major targets. For example, the major target *all* calls upon the minor target *hello*.

Minor targets follow the major ones.

Example:

```
hello: $(OBJECTS)
        $(CC) $(CFLAGS) -o hello $(OBJECTS)
```

## Special Rules

The *make* program knows about all or most standard compilers, such as the C compiler. Sometimes you need to define a rule for a special compiler, such as the parser generator *yacc*. This program takes grammars (y files) and turns them to C code

The *Makefile* rule for this program is:



```
#
# Use yacc to turn xxx.y into xxx.c
#
.y.c:
    yacc $*.y
    mv yacc.xx.cc $*.c
```

Notice that every special rule has a comment explaining what it does.

This target section can also be used to override the default rules. For example, if all your C files need to run through a special pre-processor, you can install your own rule for C compilation:

```
#
# Run the files through "fixup" before compiling them
#
.c.o:
    fixup $*.c
    $(CC) $(CFLAGS) -c $*.c
```

Some *make* programs provide you with a default rule file. **Under no circumstances should you change this file.** Doing so changes causes *make* to behave in a nonstandard way. Also, programmers expect the complete compilation instructions to be kept in the program's *Makefile*, not hidden in some system file.

## Dependencies

The dependencies section shows the relationship between each of the binary files and their source. For example:

```
hello.o: hello.c banner.h
```

tells *make* that *hello.o* is created from *hello.c* and *banner.h*.

Dependency checking is the weakest point in the *make* command. Frequently this section is out of date or missing entirely. Advanced *make* programs have an automatic dependency checking, thus eliminating the need for this section.

Other solutions have also sprung up. The public domain utility *maketd* and other similar programs automatically generate dependency lists. They all depend on this section being at the end of the *Makefile*.

## Example

The full *Makefile* for the *hello* program is:

```
#####
# Makefile for creating the program "hello"      #
# Set the variable SYSTEM to the appropriate     #
# value for your operating system.              #
#                                                #
# SYSTEM=-DBSD4_3 For Berkeley UNIX Version 4.3 #
# SYSTEM=-DSYSV      For AT&T System V UNIX    #
# SYSTEM=-DSCO       For SCO UNIX              #
# SYSTEM=-DDOS       For DOS (Borland Turbo C) #
#                                                #
# Targets are:                                  #
#     all - create the program Hello            #
#     clean - remove all object files          #
#     clobber - same as clean                  #
#     install - put the program in             #
#                 /usr/local/bin              #
#####

#
# Macro definitions
#

# The standard C compiler
CC = cc

# Compile with debug enabled
CFLAGS = -g

# The source to our program
SOURCE = hello.c

# The object file
OBJECT = hello.o

# Define one of the following for your system

SYSTEM=-DBSD4_3      # For Berkeley UNIX Version 4.3
#SYSTEM=-DSYSV      # For AT&T System V UNIX
#SYSTEM=-DSCO       # For SCO UNIX
#SYSTEM=-DDOS       # For DOS (Borland Turbo C)
```

```
# Compile with debug enabled
CFLAGS = -g $(SYSTEM)

#
# Major targets
#

all: hello

install: hello
        install -c hello /usr/local/bin

clean:
        rm -f hello.o

clobber: clean

#
# Minor targets
#
hello: $(OBJECTS)
        $(CC) $(CFLAGS) -o hello $(OBJECTS)
#
# No special rules
#

#
# Dependencies
#
hello.o: hello.c banner.h
```

## Common Expressions

Whenever possible, use macros for common directories or other text. For example:

```
#
# Poor practice
#
INSTALL_BIN = /usr/local/bin      # Place to put the binaries
INSTALL_MAN = /usr/local/man      # Place to put the man pages
INSTALL_HELP = /usr/local/lib    # Place to put help info.
#
# Better practice
#
DESTDIR=/usr/local
INSTALL_BIN = $(DESTDIR)/bin # Place to put the binaries
INSTALL_MAN = $(DESTDIR)/man  # Place to put the man pages
INSTALL_HELP = $(DESTDIR)/lib # Place to put help info.
```

and

```
#
# Poor practice
#

# Yacc switches
YACC_FLAGS = -c -t -I/project/include -I/general/include
# C switches
CFLAGS = -c -g -I/project/include -I/general/include

#
# Good practice
#
INCLUDES=-I/project/include -I/general/include

# Yacc switches
YACC_FLAGS = -c -t $(INCLUDES)

# C switches
CFLAGS = -c -g $(INCLUDES)
```

## Complexity

Installing a program can be tricky. I've seen a shell script with more than 100 lines created just to install a single program. There is a temptation to put long, complex command sets into the *Makefile*. Because of the difficulties of both shell program and *Makefile* format, this results in a large, complex, and impossible to maintain piece of code.

In general, it is best to put large command scripts in a batch file. This makes it easier to test, debug, and comment them.

## Portability Considerations

*Makefiles* have a standard format that is portable across most systems. However, compile time options differ from system to system. For example, a program written to work on both UNIX and DOS will require two entirely different commands sets to create it. Stuffing two sets of compilation instructions in a single *Makefile* can get messy. When this happens, it is best to create a separate *Makefile* for each system. The standard method for naming these various *Makefiles* is `<system>.mak`. Some standard names are:

<i>bsd.mak</i>	BSD4.3 UNIX Makefile
<i>att.mak</i>	AT&T System V
<i>sun.mak</i>	SUNOS UNIX system
<i>turboc.mak</i>	DOS using Borland's Turbo C
<i>msc.mak</i>	DOS using Microsoft's C compiler
<i>sco.mak</i>	SCO UNIX

This list can grow quite long as programs are ported to more and more systems. A *read.me* file must be distributed with the software to describe how to select the proper *Makefile*.

## Generic Makefiles

Some of the more advanced *make* commands have an include facility that allows the inclusion of other files in the *Makefile*. Some programmers have tried to create generic *Makefiles*, to be used like this:

```
#
# Define some macro names to be
# used by the generic Makefile
#
SRCS=hello.c
OBS=hello.o
PROGRAM=hello

include(Makefile.generic)
```

In theory, this should work nicely. There is one generic *Makefile* that does everything, then all you have to do is set things up properly.

In practice, though, it's not so simple. Creating a program is never a standard process and far too many have their little peculiarities. Trying to program around them in a generic *Makefile* is extremely tricky.

One approach is to create a generic *Makefile* to be used as a template for making custom *Makefiles*. The problem with this approach is that when you want to add a new target to every

*Makefile*. *you* must edit each one.

The solution? There isn't one. This is a classic trade-off of standardization vs. flexibility. Generic *Makefiles* are standard but inflexible. Individual *Makefiles* are flexible but hard to standardize.

## **Conclusion**

*Makefiles* are as important to the programming process as the program itself. A well designed *Makefile* makes it easy to create a program. Comments are necessary to tell programmers the vital information that lets them create future versions of your program.

## Chapter 6: Preprocessor

The C preprocessor provides many additional features not found in the language itself. You can use these to create constants, to include data from other files, to shoot yourself in the foot.

Problems with preprocessors are difficult to spot because they are not obvious. Even the compiler may misreport preprocessor errors. For example, the following program generates an error on Line 5 when the problem is really a bad **#define** statement on Line 1.

```
1 #define VALUE_MAX 300 ++ 5 /* Problem is here */
2
3 void check(int value)
4 {
5     if (value > VALUE_MAX) {
6         printf("Value %d is out of range\n", value);
7         abort();
8     }
9 }
```

Good style is the best defense against preprocessor efforts. It is extremely important. By religiously following the rules discussed here, you can catch errors before they happen.<sup>1</sup>

### Simple Define Statements

One of the uses of the **#define** statement is to define simple constant format is this:

```
#define SYMBOL value /* comment */
```

The *SYMBOL* is any valid C symbol name (by convention, **#define** names are all uppercase). The *value* can be a simple number or an expression.

Like variable declarations, a constant declaration needs a comment explains it. This comment helps create a dictionary of constants.

Some examples:

```
/* Max number of symbols in a procedure */
#define SYMBOL_MAX 500

/* The longest name handled by this system */
#define NAME_LENGTH 50
```

#### **Rule 6-1:**

**#define** constants are declared like variables. Always put a comment describes the constant after each declaration.

---

1. Religion, noun. Something a programmer gets after working until two in the morning only find a bug that wouldn't have been there had he or she religiously followed the rules.

**Rule 6-2:**

*Constant names are all upper-case.*

**Constant expressions**

If the *value* of a **#define** statement is a compound expression, you can run problems. The following code looks correct, but it hides a fatal flaw.

```
/* Length of the object (inches) (part1=10, part2=20) */
#define LENGTH 10 + 20      /* Bad practice */

#define WIDTH 30           /* Width of table (in inches) */

/*..... */
/* Prints out an incorrect width */
printf("The area is %d\n", LENGTH * WIDTH);
```

Expanding the *printf* line, you get:

```
printf("The area is %d\n", LENGTH * WIDTH);
printf("The area is %d\n", 10 + 20 * WIDTH);
printf("The area is %d\n", 10 + 20 * 30);
```

This another example of how the C preprocessor can hide problems. Clearly LENGTH is 10 + 20, which is 30. So LENGTH is 30, right? Wrong. LENGTH literally 10 + 20, and:

```
10 + 20 * 30
```

is vastly different from:

```
30 * 30
```

To avoid problems like this, always surround all **#define** expressions with parenthesis ( ( ) ). Thus, the statement:

```
/* Length of the object (inches) (part1=10, part2=20) */
#define LENGTH 10 + 20      /* Bad Practice */
```

Becomes:

```
/* Length of the object (inches) (part1=10, part2=20) */
#define LENGTH (10 + 20)    /* Good Practice */
```

**Rule 6-3:**

*If the value of a constant is anything other than a single number, enclose it in parentheses.*

**#define constants vs. consts**

In ANSI C constants can be defined two ways: through the **#define** statement and through use of the **const** modifier. For example, the following two statement, are equivalent:



```
#define LENGTH 10      /* Length of the square in inches */
const int length = 10; /* Length of the square in inches */
```

Which statement should you use? The **const** declaration is better because it is in the main part of the C language and provides more protection against mistakes.

Consider the following example:

```
#define SIZE 10 + 20    /* Size of both tables combined */
const int size = 10 + 20; /* Size of both tables combined */
```

As you've already seen, the **#define** statement is a problem. *SIZE* is a macro and always expands to `10 + 20`. The `const int size` is an integer. It has the value 30. So while the statement:

```
area = SIZE * SIZE;      /* Mistake */
```

generates the wrong number, the statement:

```
area = size * size;     /* Works */
```

generates the right number. So the **const** declaration is less error-prone. Also, if you make a mistake in defining a **const**, the compiler generates an error message that points at the correct line. With a **#define**, the error appears when the symbol is used, not when it is defined.

Then why do we have the **#define**? Because early compilers did not recognize `const` declarations. There is still a lot of code out there that was written for these compilers and that should be modernized.

#### **Rule 6-4:**

*The use of **const** is preferred over **#define** for specifying constants.*

### **#define vs. typedef**

The **#define** directive can be used to define types, such as:

```
#define INT32 long int /* 32 bit signed integer type */
```

The **typedef** clause can be used in a similar manner.

```
typedef long int int32; /* 32 bit signed integer */
```

The `typedef` is preferred over the **#define** because it is better integrated into the C language, and it can create more kinds of variable types than a mere `define`.

Consider the following:

```
#define INT_PTR int     /* Define a pointer to integer */
typedef int *int_ptr;  /* Define a pointer to an integer */
INT_PTR ptr1, ptr2;    /* This contains a subtle problem */
int_ptr ptr3, ptr4;    /* This does not */
```

What's the problem with the line `INT_PTR ptr1, ptr2`? The problem is that `ptr2` of type `integer`, not a pointer to integer. If you expand this line, the problem, comes apparent:

```
INT_PTR ptr1, ptr2;    /* This contains a subtle problem */
int *   ptr1, ptr2;    /* This contains a subtle problem */
```

Problems like this can be avoided by using **typedef**.

**Rule 6-5:**

*When possible, use **typedef** instead of **#define**.*

### Abuse of **#define** directives

It is possible to use **#define** directives for things other than constants. For example, the macro:

```
#define FOR_EACH_ITEM for (i = first; i < last; ++i)
```

can define a standard for loop. This can be used in place of a regular for.

```
FOR_EACH_ITEM
    process_item(i);
```

You can even go so far as to create macros that make your C code look like Pascal.

```
#define BEGIN I
#define END I

/*... */
if (x == Y)
    BEGIN
    / *... */
    END;
```

The problem with this approach is that you are obscuring the C language itself. The maintenance programmer who comes after you will know C, not a half-Pascal half-C mongrel.

Even the simple `FOR_EACH_ITEM` macro hides vital C code. Someone else reading the program would have to go back to the definition of `FOR_EACH_ITEM` to figure out what the code does. By using the code instead of a macro, no lookup is necessary,

You can easily understand the C code that goes into this:

```
for (i = first; i < last; ++i)
    process_item(i);
```

**Rule 6-6:**

*Don't use **#define** to define new language elements.*

### Keywords and standard functions

Defining new language elements is one problem. A far more difficult problem occurs when a programmer redefines existing keywords or standard routines. For example, in one program, the author decided to create a safer version of the string copy routine:

```
#define strcpy(s1, s1) \  
x_strcpy(s1, s2, sizeof(s1), sizeof(s2))
```

This worked great until the program was ported. Then the program mysteriously bombed at the code:

```
/* This lines hangs the system */  
strcpy(name, "noname.c");
```

The programmer performing the port was baffled. There was nothing wrong with the parameters to *strcpy*. And of course, because *strcpy* is a standard function, there Shouldn't be a problem with it.

But in this case, *strcpy* is not a standard function. It's a non-standard macro that results in a great deal of confusion.

Think about how difficult it would be to find your way if someone gave you directions like these: "When I say north I mean west, and when I say west I mean north. Now, go north three blocks, turn west for one (when I say one I mean four), and then east two. You can't miss it."

**Rule 6-7:**

*Never use #define to redefine C keywords or standard functions.*

## Parameterized Macros

The **#define** may have arguments. For example, the following macro doubles a number:

```
/* Double a number */  
#define DOUBLE_IT(number) (2 * (number))
```

Enclosing the entire macro in parenthesis avoids a lot of trouble similar to the problems with simple **#defines**.

**Rule 6-8:**

*Enclose parameterized macros in parentheses.*

In the next example, the macro *SQUARE* is supposed to square a number:

```
/* Square a number */  
#define SQUARE(X) (x * x)  
/* Bad practice, no () around parameter */
```

The invocation of the macro:

```
a = SQUARE(1 + 3);
```

expands to:

```
a = (1 + 3 * 1 + 3);
```

which is not what was expected. If the macro is defined as:

```
/* Square a number */
#define SQUARE(X) ((X) * (X))
```

Then the expansion will be:

```
a = ((1 + 3) * (1 + 3));
```

### **Rule 6-9:**

*Enclose each argument to a parameterized macro in parenthesis.*

## **Multi-line Macros**

The **#define** statement can be used to define code as well as constants. For example:

```
/* Print current values of registers (for debugging) */
#define PRINT_REGS printf("Registers AX=%x BX=%x\n", AX,BX);
```

This is fine as long as the target of the **#define** is a single C statement. Problems occur when multiple statements are defined. The following example defines a macro **ABORT** that will print a message and exit the system. But it doesn't work when put inside an **if** statement.

```
/* Fatal error found, get out of here */
#define ABORT print("Abort\n"); exit(8);
```

```
/*.... */
if (value > LIM)
    ABORT;
```

problem can easily be seen when we expand the macro:

```
if (value > LIM)
    printf("Abort\n"); exit(8);
```

Properly indented, this is:

```
if (value > LIM)
    printf("Abort\n");
exit(8);
```

This is obviously not what the programmer intended. A solution is to enclose multiple statements in braces.

```
/* Fatal error found, get out of here */
#define ABORT { printf("Abort\n"); exit(8); }
/* Better, but not good */
```

This allows you to use the **ABORT** macro in an **if**, like this:

```
if (value > LIMIT)
    ABORT;
```

Unfortunately, it causes a syntax error when used with an **else**:

```
if (value > LIMIT)
    ABORT;
else
    do_it();
```

The **do/while** statement comes to the rescue. The statement:

```
do {
    printf("Abort\n");
    exit(8);
} while (0);
```

executes the body of the loop once and exits. C treats the entire **do/while** as a single statement, so it's legal inside a **if/else** set.

Therefore, properly defined, the macro is:

```
/* Print an error message and get out */
#define ABORT                                \
    do {                                     \
        printf("Abort\n");                  \
        exit(8);                            \
    } while (0)                             /* Note: No semicolon */
```

**Rule 6-10:**

*Always enclose macros that define multiple C statements in braces.*

**Rule 6-11:**

*If a macro contains more than one statement, use a do/while structure to enclose the macro. (Don't forget to leave out the semicolon of the statement).*

When macros grow too long, they can be split up into many lines. The preprocessor uses the backslash (\) to indicate “continue on next line.” The latest ABORT macro also uses this feature.

Always stack the backslashes in a column. Try and spot the missing backslash in the following two examples:

```

/* A broken macro */
#define ABORT
    do {
        printf("Abort\n");
        exit(8);
    } while (0)

/* Another broken macro */
#define ABORT \
    do { \
        printf("Abort\n"); \
        exit(8);
    } while (0)

```

The mistake in the first example is obvious. In the second example, the problem is hidden.

**Rule 6-12:**

*When creating multi-line macros, align the backslash continuation characters (\) in a column.*

## Macros and Subroutines

Complex macros can easily resemble subroutines. It is entirely possible to create a macro that looks and codes exactly like a subroutine. The standard functions `getc` and `getchar` are actually not functions at all, but macros. These types of macros frequently use lower-case names, copying the function-naming convention.

If a macro mimics a subroutine, it should be documented as a function. That involves putting a function-type comment block at the head of the macro:

```

/*****
 * next_char -- move a buffer pointer up one char      *
 *                                                    *
 * Parameters                                          *
 *     ch_ptr -- pointer to the current character      *
 *                                                    *
 * Returns                                            *
 *     pointer to the next character or NULL if none. *
 *****/
#define next_char(ch_ptr) \
    /* ... definition ... */

```

**Rule 6-13:**

*Always comment any parameterized macros that look like functions.*

## The #include Directive

Include files are used to define data structures, constants, and function prototypes for items used by multiple modules. It is possible to put code in an include file, but this is rarely done.

### Style for #Includes

Most programs put the **#include** directives in a group just after the heading comments. That way they are all together in a known place. System includes are enclosed in `<>` come first, followed by any local includes (enclosed in `" "`).

Example:

```
/* *****  
 *    ... heading comments    *  
 * ***** */  
/* System includes */  
#include <stdio.h>  
#include <alloc.h>  
#include <string.h>  
  
/* Local includes */  
#include "key.h"  
#include "table.h"  
#include "blank.h"
```

#### **Rule 6-14:**

*#include directives come just after the heading comments. Put system includes first, followed by local includes.*

**#include** directives that use absolute file names, that is specify path and name, such as `/user/sam/program/data.h` and `Y:\DEVELOP\PROGRAM\DEFS.H` make your program non-portable. If the program is moved to another machine, even one using the same operating system, the source will have to be changed.

The solution is to never use absolute paths. The compiler can be pointed to the correct directory by using the `-I` option. That way you need to change only one Makefile instead of a bunch of source files.

```
/* Non portable */  
#include "/user/sam/program/data.h"  
  
/* Portable, compile with "-I/user/sam/program" */  
#include "data.h"
```

#### **Rule 6-15:**

*Do not use absolute paths in #include directives. Let the -I compile opt*

## Protecting against double #Includes

Include files can contain **#include** directives. This means that you can easily include the same file twice. For example, suppose *database.h* and *symbol.h* both need the file *defs.h*. Then, putting these lines:

```
#include "database.h"
#include "symbol.h"
```

in your program brings in two copies of *defs.h*. Defining a structure or type twice can cause errors. So how do you avoid this problem? The solution is to use conditional compilation to prevent the double include from causing trouble.

```
#ifndef _DEFS_H_INCLUDED_
#define _DEFS_H_INCLUDED_
```

And at the end, insert this line:

```
#endif /* _DEFS_H_INCLUDED_ */
```

The first time through, *\_DEFS\_H\_INCLUDED\_* is not defined.

The **#ifndef** causes the entire body of the file to be included and *\_DEFS\_H\_INCLUDED\_* to be defined. Therefore, when the file is included the **#ifndef** kicks in, and the entire body of the file is now **#ifdef**ed out.

## Conditional Compilation

The preprocessor allows you to conditionally compile sections of code through the use of **#ifdef**, **#else**, and **#endif** directives.

For example:

```
#ifdef DOS
#define NAME "C:\ETC\DATA"
#else /* DOS */
#define NAME "/etc/data"
#endif /* DOS */
```

Actually, the **#else** and **#endif** directives take no arguments. The following line is entirely a comment, but a necessary one. It serves to match **#else** and **#endif** directive with the initial **#ifdef**.

**Note:** Some strict ANSI compilers don't allow symbols after **#else** or **#endif** directives. In these cases, the comment *DOS* must be formally written as */\* DOS \*/*.

### Rule 6-16:

*Comment **#else** and **#endif** directives with the symbol used in the initial **#ifdef** or **#endif** directive.*

Use conditional compilation sparingly. It easily confuses the code.



```
#ifdef SPECIAL
float sum(float a[])
#else /* SPECIAL */
int sum(int bits)
#endif SPECIAL
{
#ifdef SPECIAL
    float total;    /* Total so far */
#else /* SPECIAL */
    int total;     /* Total number of bits */
#endif /* SPECIAL */
    int i;        /* General index */

#ifdef SPECIAL
    total = 0.0;
#else /* SPECIAL */
    total = 0;
#endif /* SPECIAL */

#ifdef SPECIAL
    for (i = 0; a[i] != 0.0; ++i)
        total += (( bits & i) != 0);
#else /* SPECIAL */
    for (i = 0x80; i != 0: i >> 1)
        total += a[i];
#endif /* SPECIAL */

    return (total);
}
/*
 * A comment explaining that this
 * is bad code would be redundant
 */
```

The structure of this function is nearly impossible to pick out. Actually, it consists of two completely different functions merged together. There are a few lines of common code, but not many.

```
float sum(float a[])
{
    float total;    /* Total so far */
    int i;          /* General index */

    total = 0.0;

    for (i = 0; a[i] != 0.0; ++i)
        total += (( bits & i) != 0);

    return (total);
}

int sum(int bits)
{
    int total;      /* Total number of bits */
    int i;          /* General index */

    total = 0;

    for (i = 0x80; i != 0; i >> 1)
        total += a[i];

    return (total);
}
```

Avoid complex conditional sections. C is difficult enough to understand without confusing the issue. Usually it is better to write two entirely separate but clearer functions.

**Rule 6-17:**

*Use conditional compilation sparingly. Don't let the conditionals obscure the code.*

## Where to define the control symbols

The control symbols for conditional compilation can be defined through **#define** statements in the code or the **-D** compiler option.

If the compiler option is used, the programmer must know how the program was compiled in order to understand its function. If the control symbol is defined in the code, the programmer needs no outside help. Therefore, avoid the compiler option as much as possible.

**Rule 6-18:**

*Define (or undefine) conditional compilation control symbols in the code rather than using the **-D** option to the compiler.*

Put the **#define** statements for control symbols at the very front of the file. After all, they control how the rest of the program is produced.

Use the **#undef** statement for symbols that are not defined. This serves several functions. It tells the program that this symbol is used for conditional compilation. Also, **#undef** contains a comment that describes the symbol. Finally, to put the symbol in, all the programmer needs to do is change the **#undef** to **#define**.

```
#define CHECK      /* Internal data checking enabled */
#undef  DEBUG      /* Not the debug version of the program */
```

**Rule 6-19:**

*Put **#define** and **#undef** statements for compilation control symbols at the beginning of the program.*

## Commenting out code

Sometimes a programmer wants to get rid of a section of code. This may be because of an unimplemented feature, or some other reason. One trick is to comment it out, but this can lead to problems:

```
/*-----Begin commented out section -----
open_database();
update_symbol_table();      /* Add our new symbols */
close_database();
/*-----End commented out section-----*/
```

Unless your compiler has been extended for nested comments, this code will not compile. The commented-out section ends at the line */\* Add our new symbols \*/*, not at the bottom of the example.

Conditional compilation can accomplish the same thing, with much less hassle.

```
#ifdef UNDEF
open_database();
update_symbol_table();      /* Add our new symbols */
close_database();
#endif /* UNDEF */
```

**Note:** This will not work if the programmer defines the symbol (However, any programmer who defines this symbol should be shot.)

**Rule 6-20:**

*Do not comment out code. Use conditional compilation (**#ifdef UNDEF**) to get rid of unwanted code.*

Sometimes the programmer wants to take out a section of code for a minutes for debugging. This can be done in a similar way:

```
#ifdef QQQ
    erase_backups();
#endif QQQ
```

The symbol *QQQ* was chosen because it is probably not defined and is easy spot with an editor. This allows all *QQQ* lines to be quickly removed when the is found.

***Rule 6-21:***

*Use #ifdef QQQ to temporarily eliminate code during debugging.*



## Chapter 5: Statement Details

Statements are basic building blocks of a C program, very much as sentences are basic building blocks of English writing. C provides programmers with a rich set of operations, allowing them to easily construct complex and powerful statements. This power must be used judiciously, however. It is far too easy to create complex, unreadable, sometimes indecipherable and unreliable C code. The rules discussed this chapter will help you create simple, readable, reliable code.

### Doing Nothing

One of the most overlooked statements is the “do nothing”, or null, statement. The syntax for this statement is extremely simple:

Because it's so tiny, the null statement can easily be missed. For example, the code:

```
for (i = 0; string[i] != 'x'; ++i);
```

actually contains two statements: a for statement and a null statement. Most people must look closely at this code to find the null statement.

That's bad style. The structure of a well-constructed program is obvious; it does not require close inspection. We need to do something to the null statement to make it obvious, and comment lines easily provide the answer:

```
/* Do nothing */;
```

Now the code fragment looks like this:

```
for (i = 0; string[i] != 'x'; ++i)
    /* Do nothing */;
```

With this construction, it is obvious that there are two statements.

#### **Rule 5-1:**

*Always put a comment in the null statement, even if it is only*

```
/* Do Nothing */;
```

### Arithmetic Statements

C provides the programmer with a rich set of operators. There are 15 precedence rules in C (&& comes before |, etc.). For example, in this statement:

```
result = 1 << 5 + 1;
```

does the compiler perform the << or the + first? In other words, is the statement equivalent to this:

```
result = (1 << 5) + 1;
```

or to this:

```
result = 1 << (5 + 1);
```

it turns out that + comes before <<, so the second version is correct.

The problem is that all these rules are difficult to remember. I've been programming in C for over 10 years and I can't remember all the rules. I even had to look up the answer to this problem.

Even if you remember all the rules, have pity on the programmer who will be reading your code someday and who may not have your memory. I've devised a practical subset that's simple to memorize:

**Rule 5-2:**

*In C expressions, you can assume that \*, /, and % come before + and -. Put parentheses around everything else.*

Following this rule, the problem expression becomes:

```
result = 1 << (5 + 1);
```

and in this statement, the order of operations is obvious.

## Function Headings

All C code is contained in functions. The function heading defines its return type and the parameters.

Example:

```
float average(float total, int n_items)
```

There are actually two styles of function declarations. Throughout this book I've been using the newer ANSI-C style. Older compilers allow only the traditional K&R style:

```
float average(total, n_items)
float total;
int n_items;
```

The ANSI-C style is preferred because it is more modem, less error prone, and compatible with C++. Reserve the use of the K&R style for old compilers that don't allow ANSI style declarations.

**Rule 5-3:**

*Use ANSI style function declarations whenever possible.*

## K&R style parameters

Some of the older C compilers force you to use K&R style parameters. This format does not allow types in the function declaration. The types immediately follow the function declaration.

```
int total(values, n_values)
int values[];
int n_values;
```

Strictly speaking, the declaration `int n_values` is redundant. The type of all parameters defaults to **int**. So you could have written this function as:

```
/* Poor style */
int total(values, n_values)
int values[];
```

The problem with this is the problem that occurs with all defaults: you can't tell the programmer's intent. Did the programmer intend to make `n_value` integer or leave out a declaration? When you explicitly declare all parameters, you eliminate an doubt.

**Rule 5-4:**

*When using K&R parameters, declare a type for every parameter.*

The type declarations for the parameters may be specified in any order. For example:

```
/* Poor style */
int total(values, n_values)
int n_values;
int values[];
```

The problem here is that you are fighting with the natural one-to-one correspondence between parameters and their type declarations. It's a lot easier find things if they are put in order.

**Rule 5-5:**

*When using K&R parameters, put the type declarations for the parameters in the same order as the occur in the function header.*

## Return type

In C, defining the function type is optional. If the type is not specified defaults to **int**. For example:

```
int do_it(void);
and
do_it(void);
```

are equivalent in C. However, they are not the same to the programmer because I second form is ambiguous. There can be two reasons for not specifying a function type: the return type really should be **int**, or the programmer forgot to define correct return type.

The explicit declaration of an **int** function type tells the reader of the program, "Yes, this function really does return an **int**."

**Rule 5-6:**

*Always declare a function type*

It is possible to have an integer function that doesn't return anything. For example



```
do_more(void)
{
    /* ..... */
    return;
}
```

Code like this can be found in older programs that pre-date the invention **void** type. Good style means that you tell the reader as much as possible

**Rule 5-7:**

*Always declare functions that do not return a value as **void**.*

## Number of parameters

In theory, functions can have any number of parameters. In practice, not quite true. That's because while the compilers may be able to handle a function with 100 parameters, programmers cannot.

Long parameter lists remind me of a passage from the UNIX mag tape manual page: “Devices /dev/rmt0, /dev/rmt4, /dev/rmt8, /dev/nrmt0, /dev /dev/nrmt8 are the rewinding low density, rewinding medium density, rewinding high density, non-rewinding low density, non-rewinding medium density, non-rewinding high density devices, respectively.” The problem with long lists is that you tend to lose track of things.

What's the device name of the “non-rewinding medium density” tape? Try to figure it out without counting on your fingers.

Suppose you want to define a function to draw a line. You could write it like this:

```

/*****
 * DrawLine - Draw a line
 *     draws a line from current point (set by
 *     a previous call to GotoPoint to x,y)
 *
 * Parameters
 *     x - Point we draw to (x co-ordinate)
 *     y - Point we draw to (y co-ordinate)
 *     style - line style (DASHED, SOLID)
 *     brush - the type of brush to draw with
 *     pattern - pattern for filling in the line
 *               (STRIPPED, CROSS_HATCH, SOLID)
 *     end_style - how to draw the ends
 *               (CAPPED, FLUSH, ...)
 *     front -- true if the line is to be drawn over
 *               everything (false, draw in back)
 *****/
void DrawLine(int x, int y,
              style_type style, color_type color,
              brush_type brush, pattern_type pattern,
              end_style_type end_style, boolean front);

```

This is a disaster waiting to happen. All sorts of problems can easily occur. You forget a parameter, get the parameters out of order, or generally confuse things. Allowing no more than five parameters to a function can help alleviate this.

**Rule 5-8:**

*Allow no more than five parameters to a function.*

But now what do you do with the function *DrawLine*? The solution is to take this herd of parameters and stuff them into a structure:

```

struct draw_style {
    /* style for drawing (DASHED, SOLID) */
    style_type style,

    /* color (BLACK, WHITE, BLUE,...) */
    color_type color,

    /* the type of brush to draw with */
    brush_type brush,

    pattern_type pattern, /* pattern (STRIPPED, SOLID) */

    /* line ends (CAPPED, FLUSH, ...) */
    end_style_type end_style,

    boolean front          /* Front or back */
};

/*****
 * DrawLine - Draw a line                                     *
 *     draws a line from current point (set by               *
 *     a previous call to GotoPoint to x,y)                  *
 *                                                           *
 * Parameters                                                *
 *     x - Point we draw to (x co-ordinate)                 *
 *     y - Point we draw to (y co-ordinate)                 *
 *     how - structure describing how to draw the line      *
 *****/
void DrawLine(int x, int y, struct draw_style *how);

```

There are tremendous advantages to using structures for complex parameter, passing. First, it's easier to remember a structure's field name than it is a parameter's position number. (Without looking, can you tell if `pattern` is the fifth or sixth parameter?)

Another advantage is that you need set only the fields that apply. You can ignore the others. If you used a long parameter list, you must have something for, each parameter.

Structures also make it easy to specify default value. For example, if you define the following defaults:

Field	Default Value	Integer value of default
<code>style</code>	<code>SOLID</code>	0
<code>color</code>	<code>BLACK</code>	0

Field	Default Value	Integer value of default
brush	SMALL_ROUND	0
pattern	SOLID	0
end_style	CAPPED	0
front	FALSE	0

then the statement:

```
memset(&current_style, '\0', sizeof(struct style));
```

initializes the entire structure with default values. (Note: For this to work, the default must all be zero.)

## Passing parameters in globals

Another way of passing parameters to and from a function is to not use parameters at all. Instead, values are passed through global variables. For example, consider the following function:

```

/*****
 * GetToken - read the next token
 *
 * Globals used
 *   in_file -- file to get token from
 *   token -- the token we just got
 *   error -- 0 = no error
 *           non-zero = error code
 *****/

```

There are many problems with this type of parameter passing. First, obscures the interface between the function and the outside world. What's type of token? You can't tell. Also, suppose you want to handle multiple files. Then your main code must keep reassigning `in_file` so that it points to what file you are using. For example:

```

in_file = main_file;
GetToken();
main_token = token;

in_file = include_file;
GetToken();
include_token = token;

```

It's much easier to write:

```
main_token = GetToken(in_file, &error);
include_token = GetToken(include_file, &error);
```

A good function interface provides the user with a single, small interface to the function. When parameters are passed as globals, the function interface is divided into two (or more) parts. The global declarations are in one part of header file and the function declaration in another.

Also, using these types of functions is difficult, requiring multiple statements. It's extremely easy to get things wrong. When you pass parameters as parameters, C checks both the number and type of the parameters. These checks are a big help in improving reliability.

**Rule 5-9:**

*Avoid using global variables where function parameters will do.*

## **XView style parameter passing**

XView programming uses a nearly unique parameter passing style. (It shares this style with the Suntools system from Sun.) For example, the function *XvSet* is defined as:

```
XvSet(handle,
      item, [value], [value], [value], ....
      item, [value], [value], [value], ....
      NULL);
```

The unique feature of this calling sequence is the use of variable parameter lists. "Item" is a XView attribute. The number of parameters that follow are defined by the attribute.

For example, a typical *XvSet* function looks like this:

```
XvSet(popup,
      PANEL_CHOICE_NROWS, 5,
      PANEL_CHOICE_STRINGS,
      "Start",
      "Run",
      "Abort",
      "Pause",
      "Continue",
      NULL,
      NULL);
```

The parameter `PANEL_CHOICE_NROWS` is followed by a single number, and `PANEL_CHOICE_STRINGS` is followed by a list of names. This list is terminated by a `NULL`. The entire parameter list is terminated by a `NULL`.

Programmers at Sun went to a lot of work devising this parameter-passing mechanism. It's too bad they came up with something so poor. There are many problems with this style.

First, since the parameter list is variable length and the types of the variables are not fixed, it is impossible to check the type and number of parameters. This defeats any type-checking built into C or *lint*.

The second problem occurs when a terminator is accidentally omitted. In the example, the list of names is terminated by a NULL. What would happen if you forgot it?

```
XvSet (popup ,
      PANEL_CHOICE_NROWS , 5 ,
      PANEL_CHOICE_STRINGS ,
          "Start" ,
          "Run" ,
          "Abort" ,
          "Pause" ,
          "Continue" ,
      NULL) ;
```

The *XvSet* function reads the parameters, finds the NULL after the strings, and assumes that it ends the strings. *XvSet* thinks more parameters follow, but there are none, so it reads random memory and goes crazy.

It would be much easier to turn the very general *XvSet* into a series of simpler, specialized functions:

```
XvSetPanelNrows (popup , 5) ;
XvSetPanelChoiceStrings (popup , string_list) ;
```

This style of parameter passing lets C's type checking do its job and avoids many potential problems.

### **Rule 5-10:**

*Avoid variable length parameter lists. They are difficult to program and can easily cause trouble.*

## **The if Statement**

The **if/else** statement presents the programmer with some special problems. The first is ambiguity. There is a small "hole" in the syntax, as illustrated in the following example:

```
if (a)
    if (b)
        printf ("First\n");
    else /* Indentation is off */
        printf ("Second\n");
```

The question is, which if does the else go with?

- A) It goes with `if (a)`
- B) It goes with `if (b)`
- C) The answer doesn't matter if I don't write code like this.

Give yourself ten points if you answered C. If you don't write silly code, you won't have to answer silly questions. (For the purist, the **else** goes with the nearest **if**. Answer B.)

By using braces, you can avoid the problem of ambiguity as well as make your code clearer.

```
if (a) {
    if (b)
        printf("First\n");
    else
        printf("Second\n");
}
```

### **Rule 5-11:**

*When an **if** affects more than one line, enclose the target in braces.*

### **if/else chains**

Frequently programmers need to implement a decision tree. This usually results in a chain of **if/else** statements. Using our current indentation rules, this results in code that looks like this:

```
if (code == ALPHA) {
    do_alpha();
} else {
    if (code == BETA) {
        do_beta();
    } else {
        if (code == GAMMA) {
            do_gamma();
        } else {
            do_error();
        }
    }
}
```

This format adds needless complexity to your program, but how do you simplify it? The solution is to treat the word pair **else if** as a single keyword.

Rewriting the code using this rule results in this:

```
if (code == ALPHA) {
    do_alpha();
} else if (code == BETA) {
    do_beta();
} else if (code == GAMMA) {
    do_gamma();
} else
    do_error();
```

This is at once simpler and easier to understand.

**Rule 5-12:**

*In an **if** chain, treat the words **else** if as one keyword.*

**if and the comma operator**

The comma operator is used to combine statements. For example, the statements:

```
x = 1;  
y = 2;
```

are treated as a single statement when written as:

```
x = 1, y = 1;
```

With simple statements, the comma operator is not very useful. However it can be used in conjunction with **if** to provide the programmer with a unique shorthand.

```
if (flag)  
    x = 1, y = 1;
```

This example is syntactically equivalent to:

```
if (flag) {  
    x = 1;  
    y = 1;  
}
```

The problem with the comma operator is that when you use it you break the rule of one statement per line, which obscures the structure of the program.

**Rule 5-13:**

*Never use the comma operator when you can use braces instead.*

**The while Statement**

Sometimes you want to have a loop go on forever (or until you hit a **break**). There are two common ways of specifying an infinite loop.

```
while (1)  
  
and  
  
for (;;) 
```

The first (`while`) is preferred because it is more obvious and causes I confusion than `for(;;)`. The `while` statement gives the programmer a simple looping mechanism, and because it is so simple there are not a lot of style rule go with it.

**Rule 5-14:**

*When looping forever, use `while (1)` instead of `for(;;)`.*



Some programmers are tempted to put assignment statements inside a **while** conditional, like this:

```
/* Poor practice */
while ((ch = getc()) != EOF) {
    / *.... * /
```

This breaks the no side effects rule. It is compact, but it obscures some of the logic in the code. It is more effectively written like this:

```
/* Good practice */
while (1) {
    ch = getc();
    if (ch == EOF)
        break;
    /* ... */
```

This way, you can see the statements explicitly instead of having to extract the from some cryptic logic.

## The do/while Statement

The **do/while** statement is rarely seen in practical C programs. That's because it's redundant—there's nothing that you can do with a **do/while** that can't be done with **while** and **break**.

Because it is so rare, many programmers are surprised when they see it. Some don't even know what to do with it. For these reasons, it is better to simply not use it.

### **Rule 5-15:**

*Avoid using **do/while**. Use **while** and **break** instead.*

## The for Statement

There are two common problems with use of the **for** statement. They can have too little content, or too much.

### Missing parts of for loops

The **for** statement is actually three statements in one. Sometimes all three parts are not needed, so one or more is left blank:

```

/* Poor practice */
set_start(&start);

for (;start < end; start++) {
    / *... * /

```

There is a slight problem with this code. We've broken one of rules and did “nothing” silently. The initialization section of the **for** is the empty statement “;”. But with just a “;” to guide you, how can you tell that the programmer didn't accidentally omit the initialization statement? In fact you can't. But including the comment: `/* Start already set */` tells you the omission was intentional.

```

/* Better practice */
set_start(&start);

for (/* Start already set */;start < end; start++) {
    / *... * /

```

You also need a comment when there is no conditional clause. For example:

```

for (start = 0; /* break below */; start++) {

```

## Overstuffed for loops

So far we've discussed what happens when you put too little information for loop. It's also possible to put in too much. As mentioned before, the `c` operator can be used to combine statements in an **if**. This also works for statement. For example, the statement:

```

for (two = 2, three = 3, two < 50; two +=2, three += 3)

```

is perfectly legal. This statement causes the variable `two` to increment by 2 and the variable `three` to increment by 3, all in one loop.

The notation is complex and confusing. However spreading out the loop clarifies the logic:

```

two = 2;
three = 3;
while (two < 50) {

    /*.... */
    two += 2;
    three += 3;
}

```

You'll note that we have also changed the **for** loop to a **while**. It could be I as a **for**, but here the **while** shows the structure of the code more clearly.

Stringing together two statements using the comma operator is sometimes useful in a **for** loop, but such cases are rare.

**Rule 5-16:**

*Use the comma operator inside a for statement only to put together two statements. Never use it to combine three statements.*

## The printf Statement

The *printf* function and its cousins are used for outputting the data. The function can be used to print one or more lines. For example:

```
printf("Beginning = %d\ncurrent = %d\n End=%d\n",
      beginning, current, end);
```

Although compact, this obscures what is being output. You are writing three lines, so why not use three *printf* statements?

```
printf("Beginning = %d\n", beginning);
printf("Current = %d\n", current);
printf("End = %d\n", end);
```

Using this style, You can easily see the structure of the output.

**Rule 5-17:**

*Use one printf per line of output.*

Some people might argue that it take more time to do things this way since there are three function calls instead of one. The *printf* function is relatively slow. The amount of overhead in a function call takes 1/1000 of the time it takes to execute even a simple *printf*, so the overhead of the two extra calls in negligible.

Another problem occurs with the use of the *printf*, *puts*, and *putc* function, If you always use *printf*, you have consistency. If you use a mixture of *printf*, and *putc*, then you increase efficiency at the expense of consistency.

For example:

```
/* Consistent */
printf("Starting phase II\n");
printf("Size = %d\n", phase_size);
printf("Phase type %c\n", phase_type);

/* Efficient */
puts("Starting phase II\n");
printf("Size =%d\n", phase_size);
puts("Phase type ");
putc(phase_type);
putc('\n');
```

In most cases, the increase in efficiency is very small. You probably won't notice any speedup in your program unless the code is executed thousands of times in an inner loop. The difference in consistency is extremely noticeable, however. In most cases, readability and consistency considerations outweigh any efficiency considerations.

**Rule 5-18:**

*Unless extreme efficiency is warranted, use `printf` instead of `puts` and `putc`.*

## goto and Labels

Good programmers avoid the **goto** statement because it breaks the structure of the program. But every once in a while, even the best programmer needs to use a **goto**.

The **goto** label doesn't fit anywhere in the indentation rules. It's not part of the regular structure, so in order to give it a home, make it stand out, and generally get out of the way, put it up against the left margin.

```
    for (x = 0; x < 10; ++x) {
        for (y = 0; y < 10; ++y) {
            if (data[x][y] == look_for) {
                goto found_it;
            }
        }
    }
found_it:
```

**Rule 5-19:**

*Start **goto** labels in the first column.*

## The switch Statement

The **switch** statement is the most complex statement in C. It allows the programmer to perform a complex branching operation with a single statement, but sometimes it can be confusing.

Good programming style can make the **switch** statement clearer and more reliable. Consider the following statement:

```
/* Poor practice */
switch (state) {
    case BEGIN_STATE:
        printf("Beginning\n");
    case PROC_STATE:
        printf("Processing\n");
        break;
    case FINISH_STATE:
        printf("Finishing\n");
}
```

At the end of the `BEGIN_STATE` case, there is no **break**, so the program falls through. Thus, when `state = BEGIN_STATE`, you'll get the messages:

```
Beginning
Processing
```

Is this intentional or accidental? From this code, there is no way to know. If the programmer intends a fall through, he or she needs to tell people about it. The comment `/* Fall Through */` would help immensely, yielding:

```
/* Not so poor */
switch (state) {
    case BEGIN_STATE:
        printf("Beginning\n");
        /* Fall through */
    case PROC_STATE:
        printf("Processing\n");
        break;
    case FINISH_STATE:
        printf("Finishing\n");
}
```

**Rule 5-20:**

*End every case in a **switch** with a **break** or the comment `/* Fall Through */`*

Now consider the last **case**, `FINISH_STATE`. It doesn't need a **break** because it's at the end of the **switch**. However, you may want to consider putting in a **break** to avoid future problems. For example, you may want to add another **case**, perhaps one for `ABORT_STATE`. This would give you this:

```
/* Surprise! */
switch (state) {
    case BEGIN_STATE:
        printf("Beginning\n");
        /* Fall through */
    case PROC_STATE:
        printf("Processing\n");
        break;
    case FINISH_STATE:
        printf("Finishing\n");
    case FINISH_STATE:
        printf("Aborting\n");
}
```

You may have noticed the error: You need a **break** after the `FINISH_STATE` case. If you get in the habit of always putting in a **break** at the end of a **switch** statement, then you don't have to worry about having to put it in during code modifications.

Good habits are better than a good memory any day.

**Rule 5-21:**

*Always put a break at the end of the last case in a switch statement.*

The **switch** statement now looks like this:

```
/* Almost there */
switch (state) {
    case BEGIN_STATE:
        printf("Beginning\n");
        /* Fall through */
    case PROC_STATE:
        printf("Processing\n");
        break;
    case FINISH_STATE:
        printf("Finishing\n");
        break;
    case FINISH_STATE:
        printf("Aborting\n");
        break;
}
```

But what happens when state is `STATE_IDLE`? There are several possible answers:

1. It is ignored
2. This is a run-time error

3. When you execute this code, state will never contain `STATE_IDLE`, so you don't have to worry about what will happen.

As far as C is conceded, when state is `STATE_IDLE`, then the **switch** is ignored. But that's not good enough. Did the programmer intentionally ignore out-of-range cases, or was it accidental? Again, you don't know. If the programmer intended bad states to be ignored, he or she could have written:

```
default:
    /* Do nothing */
    break;
```

This makes explicit what was implied.

**Rule 5-22:**

*Always include a **default** case in every **switch**, even if it consists of nothing but a null statement.*

But suppose the programmer says that state can never be anything other than the three cases. Do you need a default for something that will never happen?

The answer is a resounding yes! Any experienced programmer will tell you that things that can never happen do happen. A good defensive programming technique is to include code for the impossible:

```
default:
    fprintf(stderr,
        "Internal error. Impossible state %d\n", state);
    exit(1);
```

So the full-blown switch statement has evolved into this:

```
/* Good style */
switch (state) {
    case BEGIN_STATE:
        printf("Beginning\n");
        /* Fall through */
    case PROC_STATE:
        printf("Processing\n");
        break;
    case FINISH_STATE:
        printf("Finishing\n");
        break;
    case FINISH_STATE:
        printf("Aborting\n");
        break;
    default:
        fprintf(stderr,
            "Internal error. Impossible state %d\n", state);
        exit(1);
}
```

Your work on this statement can be summarized with this rule: Always put everything in the **switch** and make it all obvious.

## Debug Printing

In spite of all the interactive debuggers, there are still times a programmer needs to use a debugging *printf*. The problem is how to separate the debugging output from the real stuff. One trick is to begin all debug printouts with “##”:

```
printf("## state = %d\n", state);
```

This not only makes it easy to identify the debug statements in the log, it also makes it easy to remove them after the program is debugged. All you have to do is search for each line containing “##” and delete it.

## Shut up Statements

Always compile your programs with all possible warnings enabled. If you are running under UNIX, run your program through the program *lint*. You want the compiler to find as many potential problems in your code as possible, so you don't have to do it in the debugging stage.

Sometimes you get warnings about things you know about. For example, you might define a variable *copyright* and never use it. Sometimes the compiler or *lint* will allow you to turn off a warning for a single statement or variable. But sometimes it won't.

For example, there is no way to turn off the “Variable defined but not used” message in the Borland C compiler for a single variable. It's either the whole program or nothing.



The solution to this problem is a set of statements designed solely to turn off warning messages. For example:

```
static char *copyright = "Copyright 1992 SDO";  
/ *.... * /  
main()
```

```
(void)copyright;      /* Avoid warning */
```

In this case the statement *(void)copyright* “uses” the variable *copyright*. The statement itself does nothing. In fact, the compiler knows it does nothing and generates no code for it. The only reason to put this statement in the code is to trick the compiler into thinking that the variable is being used so it won't issue a warning. Note that a comment is supplied to explain what was done. Otherwise someone looking at this code later might think we're crazy.

The program *lint* gets upset when you don't use the value returned by a function. The cast *(void)* can be used to tell *lint* “I know that this function returns value, but I don't care.”

```
i = get_into;        /* No warning */  
get_into;           /* Warning */  
(void)get_into;     /* No warning */
```



## Chapter 4: Statement Formatting

Organization is the key to a well-written program. Good programming style helps present the detail and logic of your program in a clear and easy-to-un stand manner.

Programming style and aesthetics are related. A well-written program pleasing to look at, read, and understand. Your goal in formatting a program is to make it look neat, well-organized, and beautiful.

### Formatting the Body of the Program

The sentence is a basic unit of writing. A sentence ends with a terminator question mark, exclamation point, or period. In C, the basic coding unit is statement. C statements do not have terminators, like sentences; rather. they separated from each other by semicolons (;).

Well laid-out programs allow the programmer to quickly and easily pick the statement within the program. Running the code together, as shown in following example, hurts readability and clarity:

```
/* Poor programming practice */
biggest=-1;first=0;count=57;init_key_words();
if(debug)open_log_files();table_size=parse_size+lex_size;
```

How many statements are in this program fragment? It's hard to tell. programmer has tried to compact the program by putting as much on each line possible. It's much like the old limerick:

*There was a young man from Iran  
Whose verses just would not quite scan.  
When someone asked why,  
He gave this reply:  
I like to put as many words on the last line as I possibly can.*

It's easier to pick out the statements when there is only one statement per line

```
/* Better programming practice (still needs work) */
biggest=-1;
first=0;
count=57;
init_key_words();
if(debug)
    open_log_files();
table_size=parse_size+lex_size;
```

#### **Rule 4-1:**

*Write one statement per line.*

There are still some problems with this fragment. True, it is much easier find the statements, but they are still hard to read. The problem is that our eyes are trained to treat a set of letters and symbols as one word. Writing sentencewithnospacesmakesitveryhardtoread. Similarly writing a C statement

**Rule 4-2:**

*Put spaces before and after each arithmetic operator, just like you put spaces between words when you write.*

```
/* Better programming practice (still needs work) */
biggest = -1;
first = 0;
count = 57;
init_key_words();
if(debug)
    open_log_files();
table_size = parse_size + lex_size;
```

Adding spaces not only improves readability, it also helps to eliminate errors. Consider the statement:

```
*average = *total / *count;      /* Compute the average */
```

Written without spaces this becomes:

```
*average=*total/*count;          /* Compute the average */
```

Looks like the same statement, but it's not. Can you spot the problem?

The operators slash (/) and star (\*) take on a new meaning when they are put together with no space. The operator /\* is the beginning of a comment. So the result of the compression is:

```
*average=*total    /* count; /* Compute the average */
```

If you have a good C compiler, you will get a warning about nested comments. If you have a typical compiler, you'll get nothing.

Now back to our program fragment. Spaces makes the individual statements easier to read, but the entire fragment is still something of a gray blob. We can do better.

This book is broken up into paragraphs. The paragraph markers separate one set of sentences from another. In C, you can use blank lines to separate code into paragraphs:

```
/* Better programming practice (still needs work) */
biggest = -1;
first = 0;
count = 57;
init_key_words();
if (debug)
    open_log_files();
table_size = parse_size + lex_size;
```

The result is a section of code that uses spaces to separate the coding element into pleasantly arranged groups.

### **Simplifying complex statements**

Sometimes a statement such as an assignment statement grows so long complex that it can't fit on one line. In such cases, consider turning a complex statement into several smaller, simpler statements.

For example, this is syntactically correct, but

```
/* This is a big mess */
gain = (old_value - new_value) /
      (total_old - total_new) * 100.0;
```

It can be rewritten as three smaller statements:

```
/* Good practice */
delta_value = (old_value - new_value);
delta_total = (total_old - total_new);
gain = delta_value / delta_total * 100.0;
```

#### **Rule 4-3:**

*Change a long, complex statement into several smaller, simpler statements.*

### **Splitting long statements**

An alternative to turning one statement into two is to split long statements into multiple lines.

Splitting is an art. The idea is to split the line in a way that does confusion. There is a rule: One statement per line. A two-line statement that rule, so always indent the second line to indicate that it is a continuation.

#### **Rule 4-4:**

*In a statement that consists of two or more lines, every line except the first must be indented an extra level to indicate that it is a continuation of the first line.*

For example:

```
net_profit = gross_profit - overhead -
            cost_of_goods - payroll;
```

This example brings up another question: Do you put operators at the end of the line, as in the previous example, or at the beginning of the next line?

```
net_profit = gross_profit - overhead
            - cost_of_goods - payroll;
```

Actually, either method is acceptable as long as it is used consistently. That means that I don't get to dodge the issue if there is any reasonable basis for choosing one method over the other.

There is a basis: majority rule. Most programmers prefer to put the operators at the end of the line. So let's go with the majority preference and make it the rule:

#### **Rule 4-5:**

*When writing multi-line statements, put the arithmetic and logical operators at the end of each line.*

### ***Splitting and parentheses.***

Complex statements in C can contain several levels of parentheses. The following example shows a complex statement that contains many parentheses. The comment below it indicates the nesting level.

```
result = (((x1 + 1) * (x1 + 1)) - ((y1 + 1) * (y1 + 1)));
/* nest 12333333322223333333211123333332222333333321 */
```

The best place to break the line is where the nesting level is lowest; in this case at the - operator in the middle:

```
result =(((x1 + 1) * (x1 + 1)) -
        ((y1 + 1) * (y1 + 1)));
```

#### **Rule 4-6:**

*When breaking up a line, the preferred split point is where the parenthetic nesting is lowest.*

The second line of the example is carefully indented so that the parenthesis line up. Why not align it with the first parenthesis?

```
/* Don't program like this */
result =(((x1 + 1) * (x1 + 1)) -
        ((y1 + 1) * (y1 + 1)));
```

Notice that the lines seem to be a little off. That's because the first line's Level 1 parenthesis is in the same column as the second line's Level 2 parenthesis.

```
/* Don't Program like this */
result = ( ( ( (3x1 + 1)3 * (3x1 + 1)3)2 -
           (2(3Y1 + 1)3 * (3Y1 + 1)3)2)1);
```

Properly aligned (Level 2 to Level 2), the same statement looks like this:

```
result = ( ( ( (3x1 + 1)3 * (3x1 + 1)3)2 -
           (2(3Y1 + 1)3 * (3Y1 + 1)3)2)1);
```

#### **Rule 4-7:**

*Align like level parentheses vertically.*

Here's a more complex example:

```
flag = (result == OK) ||
       ((result == WARNING) &&
        ((code == WARN_SHORT) ||
         (code == WARN_EOF))
       );
```

The indentation in this example gives the programmer several clues about the statement's logic. First, there are two major clauses:

```
flag = (result == OK) ||
```

and

```
((result == WARNING) &&
 (code == WARN_SHORT) ||
 (code == WARN_EOF))
);
```

They are indented at the same level. The second clause goes on for four line This is obvious because its beginning and ending parenthesis have the same indent. The two `(code ==` lines carry equal weight and are at the same level. Their beginning parenthesis are aligned in the same column.

As you can see, proper splitting and indentation of a multi-line statement c

#### ***Splitting a for statement.***

A **for** statement is unique, since it is three statement

```
for (<initialization>; <condition>; <increment>)
```

The *<initialization>*, *<condition>*, and *<increment>* are three complete C statements. If these statements have any complexity at all, the entire **for** statement is likely to overflow the line. Whenever a **for** grows too long for one line, split it first at the component statement boundaries.

For example, this line:

```
for (index = start; data[index] != 0; ++index)
```

splits like this:

```
for (index = start;
    data[index] != 0;
    ++index)
```

Note that we've aligned the beginnings of the three substatements.

**Rule 4-8:**

*Split long **for** statements along statement boundaries.*

In the previous example, we turned a one-line **for** statement into three. But if the statement is short enough, can you limit it to two lines?

```
/* Poor practice */
for (index = start; data[index] != 0;
    ++index)
```

The answer is no. The problem is that this split is ambiguous. We could just as easily have written this:

```
/* Poor practice */
for (index = start;
    data[index] != 0; ++index)
```

Consistency is part of good style. If you do things consistently, you set up expectations, which is another way of saying you remove one detail that the reader of the program has to figure out. Don't split a **for** statement one way one time and another the next. You can consistently split a **for** statement into three lines the same way every time, but there is no preferred two-line split. Two-line splits introduce inconsistency. Avoid them.

**Rule 4-9:**

*Always split a **for** statement into three lines.*

***Splitting a switch statement.***

The **switch** statement is the most complex statement in the C language. The rule for splitting it is very simple: Don't. If the index expression for a **switch** statement grows too big for one line, split it into two different statements: an assignment and a **switch**.



For example:

```
/* Bad practice */
switch (state_list[cur_state].next_state +
        goto_list[last_last] +
        special_overrides) {
```

should be turned into:

```
/* Good practice */
switch_index = (state_list[cur_state].next_state +
                goto_list[last_last] +
                special_overrides);
switch (switch_index) {
```

#### **Rule 4-10:**

*Write **switch** statements on a single line.*

### **Conditional operators (? :).**

When splitting an expression containing a conditional operation (? :), try to put the entire conditional clause on a line by itself

```
/* Good practice (preferred) */
result = past-due +
        (total-owed > 0) ? total-owed : 0;
```

#### **Rule 4-11:**

*Keep conditionals on a single line if possible.*

If the conditional clause itself is too long for one line, it can be split into three lines. The format is this:

```
(condition) ?
    (true-value) :
    (false-value)
```

Each line contains one component of the expression. Since the true-value and false-value are sub-sections of the conditional, their lines are indented.

#### **Rule 4-12:**

*When splitting a conditional clause (? :), write it on three lines: the condition line, the true-value line, and the false-value line. Indent the second and third line an extra level.*

## Side effects

When writing a children's story, you must keep the sentence structure simple and avoid compound sentences. Well, a computer is not a child; it doesn't have that much intelligence. But in C coding, you should do anything you can to simplify the program. That means avoiding side effects.

A side effect is an operation that is performed in addition the main operation of a statement. For example, the statement:

```
current = count[index++]
```

assigns `current` a value and increments `index`. Look out. Any time you start using “and” to describe what a statement does, you're in trouble. The same statement could just as easily have been written this way:

```
current = count[index]  
index++;
```

This way, there are no side effects.

C allows very free use of the `++` and `--` operators within other statements. Taking advantage of this freedom can create all sorts of problems. Consider the statement:

```
i = 0  
out[i++] = in[i++];
```

In fact, consider it a test. Exactly what does this program do?

- A) Evaluate `out[i]` as `out[0]`, increment `i` (`i` is now 1), evaluate `in[i]` as `in[1]`, increment `i` (`i` is now 2), do the assignment (`out[0] = in[1]`).
- B) Evaluate `in[i]` as `in[0]`, increment `i` (`i` is now 1), evaluate `out[i]` as `out[1]`, increment `i` (`i` is now 2), do the assignment (`out[1] = in[0]`).
- C) Evaluate `in[i]` as `in[0]`, evaluate `out[i]` as `out[0]`, increment `i` (`i` is now 1), increment `i` (`i` is now 2), do the assignment (`out[0] = in[0]`).
- D) The code is compiler dependent, so the compiler carefully computes the best possible answer and then does something else.
- E) If you don't write code like this, you won't have to worry about questions like this.

This code is ambiguous, and the actual code generated can change from compiler to compiler. Sometimes the same compiler will generate different code depending on the state of the optimize switch.

The answer, of course, is E.

Ambiguous code is not the only problem that can occur when `++` and `--` are used within other statements. The statements

```
i = 2;
s = square(i++);
```

look innocent enough. But square is a macro designed to square a number:

```
#define square(x)      ((x) * (x))
```

If you expanding the macro, you get this:

```
i = 2;
s = ((i++) * (i++));
```

Suddenly you see that *i* is not incremented once as expected, but twice. And *s* can be assigned the wrong value. Again, this statement is ambiguous.

You can avoid all these problems by writing the `++` on a separate line:

```
i = 2;
s = square(i);
i++;
```

True, putting the `++` inside another statement does make for more compact code, but the value of compactness in C source code is minimal. You're striving for readability and reliability. The one-effect-per-statement rule improves both, especially reliability.

It also simplifies the program. What are the values of *i* and *j* after the following code is executed?

```
i = 0;
j = 0;
x = 0;
i = x++;
j = ++x;
```

The increment operator acts differently depending on where it is placed. In front of a variable, the increment is performed before the assignment. Incrementing after causes the assignment to be performed first. So in the example, *i* is 0 (*x* before increment) and *j* is 2 (*x* after increment).

This code is a puzzle to some people. But you don't have to remember obscure details like this if you never write code like this. If you simplify the example, it is no longer a puzzle:

```
i = 0;
j = 0;
x = 0;

i = x;
++x;
++x;
j = x;
```

**Rule 4-13:**

*Avoid side effects.*

**Rule 4-14:**

*Put the operator ++ and -- on lines by themselves. Do not use ++ and -- inside other statements.*

**Assignments in other statements**

C also allows the programmer to put assignment statements inside other statements. For example:

```
/* Poor practice */
if ((result = do_it()) == 5)
    printf("It worked\n");
```

This is another example of a side effect that needs to be avoided. You could just as easily have written this:

```
/* Good practice */
result = do_it();
if (result == 5)
    printf("It worked\n");
```

The second form not only avoids the side effect, but it is simple and clear. The first form is compact, but remember — your goals are readability and reliability.

Unintentional assignments inside other statements can quickly cause trouble. Consider this example.

```
if (result = 5)
    printf("It worked\n");
```

This fragment should print “It worked” only when result is 5. But the code contains a bug. What it actually does is to assign 5 to result, check against (humm... no, 5 is not 0 this time) and print unconditionally.

Experienced programmers recognize this as the old = vs. == bug. They remember it from the cold, dark night when they stayed up till 2 in the morning staring the bug in they eye a dozen times and not recognizing it the first eleven.

Novice programmers, be warned: you will make this mistake, and it will cause you a great deal of pain.

This error is so common that now many compilers issue a warning when they see code like this. For example:

```
Borland C++ Version 3.00
Copyright (c) 1991 Borland International
Warning test.c 5:
Possibly incorrect assignment in function main
```

#### **Rule 4-15:**

*Never put an assignment statement inside any other statement.*

### **When to use two statements per line**

Although there is a rule — one statement per line — don't be fanatical about it. The purpose of the rule is to make the program clear and easy to understand. In some cases, putting two or more statements on one line improves clarity. For example, consider the following code:

```
/* Not as clear as it can be */

token[0].word = "if";
token[0].value = TOKEN_IF;

token[1].word = "while";
token[1].value = TOKEN_WHILE;

token[2].word = "switch";
token[2].value = TOKEN_SWITCH;

token[3].word = "case";
token[3].value = TOKEN_CASE;
```

This can easily be rewritten as:

```
/* Clearer */
token[0].word = "if";      token[0].value = TOKEN_IF;
token[1].word = "while";  token[1].value = TOKEN_WHILE;
token[2].word = "switch"; token[2].value = TOKEN_SWITCH;
token[3].word = "case";   token[3].value = TOKEN_CASE;
```

There is a pattern to this code. The first example obscures the pattern. You can still see it, but it's not as clear as in the second case, which is coded in two statement per line. To make the pattern clearer, the statements are organized in columns.

**Rule 4-16:**

*If putting two or more statements on a single line improves program clarity, then do so.*

**Rule 4-17:**

*When using more than one statement per line, organize the statement into columns.*

## Logic and Indentation

Over the years many people have tried to develop a way to create a document makes the logic and execution flow of a program easy to understand.

Flowcharts were an early attempt. They presented the program visually using special symbols to denote things like branch statements, input/output, termination. Figure 4-1 on the following page shows a sample flowchart. charts were excellent for small programs, but for programs of nominal size grew too big and bulky. (I remember seeing one that consisted of hundred boxes spread across a 6x5 foot grid of 11x13 inch paper. It took up whole wall of a conference room. Although it was impressive, no one could understand the whole thing.)

Another problem with early flowcharts was that at the time very I computers could do graphics. (Most couldn't even do lowercase text.) result, all flow charts had to be done by hand, and redone if the program changed.

When ALGOL and other structured languages were invented, people discovered that they could use indentation to represent levels of control. This is used in C.

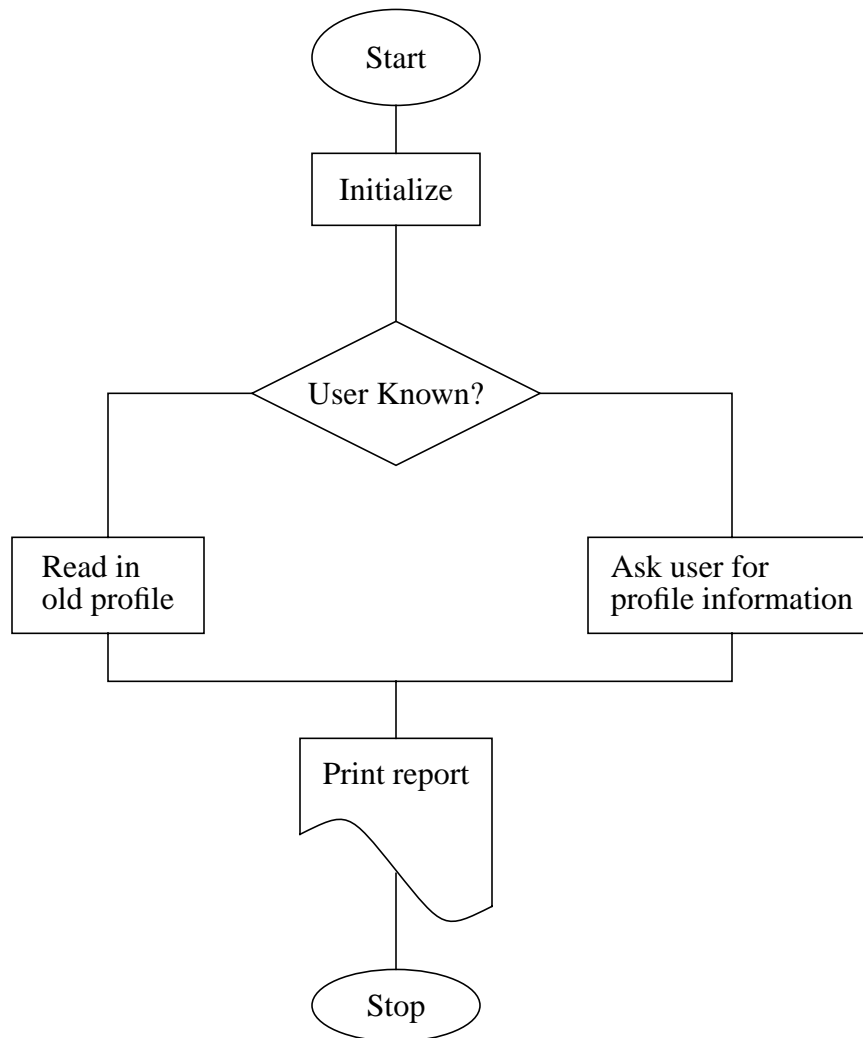


Figure 4-1: A small flow card

For example:

```
while (count > 0) {
    if (balance[index] == EOF_MARKER)
        count --;
    else
        total += balance[index];
    ++index;
}
```

In this program fragment, you can easily see that the body of the **while** contains both the **if** and the `++index` statement. The statement `count = -1` is indented an extra level, giving a visual clue that it is part of the **if**.

There are several indentation styles, but they all indent one level for each level of logic.

**Rule 4-18:**

*Indent one level for each new level of logic.*

## Indentation styles

There are many different styles of indentation, and a vast religious war being waged in the programming community as to which is best. I won't take sides, but I will present the advantages and disadvantages of each style (Incidentally, the style used throughout this book is the Short Form, chosen only because I'm used to it.)

### *Short form*

In the Short Form, the open brace (`{`) is put at the end of a line. The text within the braces is indented one level. The close brace (`}`) is aligned with the beginning of the corresponding statement.

Example:



```
/* Short form indentation
while (! done) {
    printf("Processing\n");
    next_entry();
}
if (total <= 0) {
    printf("You owe nothing\n");
    total = 0;
} else {
    printf("You owe %d dollars\n", total);
    all_totals = all_totals + total;
    if (total > 1000)
        printf("You owe a lot\n");
}
```

The advantage of this style is that it doesn't waste vertical space. The problem is that corresponding braces are not put in the same column. For example, the brace that closes the **while** lines up with the “w” in **while**, not with the brace at the end of the line. This makes it a little more difficult to match braces.

### ***Braces stand alone.***

In the Braces Stand Alone method, all braces are placed on separate lines:

```
/* Braces stand alone */
while (! done)
{
    printf("Processing\n");
    next_entry();
}
if (total <= 0)
{
    printf("You owe nothing\n");
    total = 0;
}
else
{
    printf("You owe %d dollars\n", total);
    all_totals = all_totals + total;
}
if (total > 1000)
    printf("You owe a lot\n");
```

The advantage of this is that the braces are aligned. The disadvantage is that it takes up more vertical space and tends to spread out the code.

***Braces indented too.***

This variation on the Braces Stand Alone method indents not only the statement within the braces, but also the braces themselves:

```
/* Braces stand alone */
while (! done)
    {
    printf("Processing\n");
    next_entry();
    }
if (total <= 0)
    {
    printf("You owe nothing\n");
    total = 0;
    }
else
    {
    printf("You owe %d dollars\n", total);
    all_totals = all_totals + total;
    }
if (total > 1000)
    printf("You owe a lot\n");
```

This form of indentation is not as common as the other two. It also has the problem of spacing out the code somewhat.

***Variations.***

One variation on the standard indentation styles concerns if statements that affect a single line. For example:

```
if (total > 1000)
    printf("You owe a lot\n");
```

This style of indentation can create confusion, as illustrated by the following example:

```
/* Problem code */
if (index < 0)
    fprintf(stderr, "Error: Index out of range\n");
    exit (8);
```

At first glance, it looks like the program will print an error message only if `index` is out of range. (That's what the programmer intended.) But on closer inspection, you'll notice that there are no braces enclosing the two statements under the `if`. In fact, the code is indented incorrectly.

Indented correctly, the code looks like this:

```
/* Problem code */
if (index < 0)
    fprintf(stderr, "Error: Index out of range\n");
exit (8);
```

The problem is confusion between multi-line if controlled statements and single-line statements. To solve this problem, put single-line statements and their **ifs** on the same line:

```
if (total > 1000) printf("You owe a lot\n");
```

This makes very clear that the **if** affects only one line. The problem is that it makes the *printf* line a little more difficult to find and breaks the one-statement-per-line rule.

### **How much to indent**

In this book I indent four spaces for each logic level. Why four? Here are some examples of various indentations.

***Two Spaces:***

```
/* Short form indentation */
while (! done) {
    printf("Processing\n");
    next_entry();
}
if (total <= 0) {
    printf("You owe nothing\n");
    total = 0;
} else {
    printf("You owe %d dollars\n", total);
    all_totals = all_totals + total;
}
if (total > 1000)
    printf("You owe a lot\n");
```

***Four Spaces:***

```
/* Short form indentation */
while (! done) {
    printf("Processing\n");
    next_entry();
}
if (total <= 0) {
    printf("You owe nothing\n");
    total = 0;
} else {
    printf("You owe %d dollars\n", total);
    all_totals = all_totals + total;
}
if (total > 1000)
    printf("You owe a lot\n");
```

***Eight Spaces:***

```
/* Short form indentation */
while (! done) {
    printf("Processing\n");
    next_entry();
}
if (total <= 0) {
    printf("You owe nothing\n");
    total = 0;
} else {
```

```
        printf("You owe %d dollars\n", total);
        all_totals = all_totals + total;
    }
    if (total > 1000)
        printf("You owe a lot\n");
```

The advantage of a smaller indent is that you don't run into the right margin as quickly. The disadvantage is that it's hard to tell the various levels apart.

Larger indents are easier to read, but larger indents mean that you run out of room faster.

Several researchers have studied this problem in detail. They started with the same program and indented it using different indent sizes. They then gave the various flavors of the program to a set of graduate students and told them each to enhance it by adding some additional commands. The students had never seen the program before. The researchers measured time amount of time it took each student to understand and fix the program. As a result of this and other studies like it, they concluded that four spaces is the ideal indentation.

***Rule 4-19:***

*The best indentation size is four spaces.*



## Chapter 3: Variable Names

In English, we put words together to make up sentences. The language is fairly easy to understand when you know what most of the words mean. Even if you don't know some words, you can look them up in the dictionary.

Variables are the “words” for the C language. In a program, variables have a precise definition and usage, but that definition and usage are different for each program. What's worse, some programmers tend to use abbreviations, even for simple things. Shakespeare wrote, “That which we call a rose by any other name would smell as sweet.” (Romeo and Juliet, Act II, Scene 2). But calling a rose an “RZ” creates needless confusion.

Bureaucratize is a prime example of how things get mixed up when people start using their own unique languages. Government agencies don't fire people, they “dehire” them. That probably wouldn't be confusing to the person being dehired, but consider this example: The Army files “Zipper” under “I.” why? Zipper used to be a trade name, making it illegal for Army filing, so they use the generic name “Interlocking cloth fastener.” These are the same people who file furry teddy bears under the label “Bears, fur, Edward.”

Call a spade a spade. Don't call it “spa”, “s1”, or “pronged digging implement.” Simplicity and a firm grasp of the obvious are necessary for good C programming.

### **Rule 3-1:**

*Use simple, descriptive variable names.*

## A Brief History of the Variable

Early computers were initially used for solving complex and repetitive mathematical equations. Not surprisingly, early programming languages looked a lot like algebra. Mathematicians generally use single character variable names because they don't care what the variables stand for. (They're not supposed to; that's what it means to be a mathematician.)

For example, the equation for the area of a triangle is:

$$a = \frac{1}{2}bh$$

where a is the area of the triangle, b is the base, and h is the height.

This sort of notation is highly compact. You can express a lot on a single line.

$$\frac{\frac{1}{n} \sum U_f U_{k+1} - \left(\frac{1}{n} \sum U_f\right) \left(\frac{1}{n} \sum U_{f+1}\right)}{\lim_{n \rightarrow \infty} \sqrt{\left(\frac{1}{n} \sum U_j^2 - \left(\frac{1}{n} \sum U_f\right)^2\right) \left(\frac{1}{n} \sum U_f^2 + k - \left(\frac{1}{n} \sum U_{f+k}\right)^2\right)}}$$

However, it isn't very clear. Even the simple triangle example requires a somewhat longer line of explanation so we know the meaning of a, b, and h.

In mathematics, you can append notes when you need to break out of the sea of symbols to explain what the symbols stand for. In programming, where code can easily run 10 or more pages and where you care a little more what the symbols stand for, variable names should be more meaningful.

As people discovered that they needed longer variable names, computer languages improved. The first BASIC interpreter limited variables to a single letter and an optional digit (A, B2, C3, etc.)

FORTRAN gave the programmer six characters to play with—really 5 1/2, since the first character denoted the default type. That meant that instead of using I for an index, you could use a name like INDEX. This was progress. (One problem with FORTRAN was that it used the first letter of the variable name for type information. So people would use KOUNT for “count” so that the type would be integer.)

In C the length of a variable name is unlimited (although the first 31 characters must be unique). So variable names like these:

```
disk_name      total_count      last_entry
are legal.
```

If long is better, then very long must be much better, right? Consider this example:

```
total_number_of_entries_with_mangled_or_out_of_range_dates
```

This is an extremely descriptive name; you know exactly what this variable is used for. But there are problems with names like this. First, they are difficult to type. Second, remembering the exact wording of such a long name is not easy. Finally, look at what happens when you try to use this variable in a statement:

```
total_number_of_entries_with_mangled_or_out_of_range_dates =
    total_number_of_entries_with_mangled_input +
    total_number_of_entries_with_mangled_output +
    total_number_of_entries_with_out_of_range_dates;
```

True, you know what the variables are, but the statement logic is obscured by the excess verbosity of the names.



Choosing the right variable name is a balancing act. It must be long enough to be descriptive, yet short enough to be memorable and useful.

Over the years, the following rule of thumb has evolved.

**Rule 3-2:**

*Good variable names are created by using one word or by putting two or three words together, separated by “\_”. For example:*

```
/* Good variable names */
start_time      start_date      late_fee
current_entry   error_count     help_menu
AllDone         ModemName       LastNumberCalled
```

## Capitalization

Shortly after the invention of moveable type, printers began to arrange their letters in specially designed boxes, or cases. Soon a standard arrangement emerged: two drawers were used for each typeface, the top one holding the capital letters, and the bottom for all the others. Thus the terms uppercase and lowercase.

In many programming languages case is ignored, but in C, uppercase is distinguished from lowercase. This means, for example, that Count, count and COUNT are three different names. This can lead to problems, but it also gives you another tool for making variable names meaningful.

Over the years programmers have devised special naming and capitalization conventions for variables, functions, and constants.

### System A

total_count	Variable and function names	All lowercase words separated by underscores
NAME_MAX	Constants	All uppercase words separated by underscores

One of the advantages of this system is that all the component words (total, count, name, max) are separated from each other. This allows you to run the program through a spelling checker.

### System B

TotalCount	Variable and function names	Upper/Lower case with no separators.
NAME_MAX	Constants	All uppercase words separated by underscores

This system uses a different style for variables and functions. Research shows, incidentally, that people find upper- and lowercase words easier to read than lowercase only. System B is not very common.

### System C

<code>total_count</code>	Local variable and function names	All lowercase words separated by underscores
<code>TotalCount</code>	Global variables and functions	Uppercase and lowercase with no separators.
<code>NAME_MAX</code>	Constants	All uppercase words separated by underscores

This system uses a different format for local and global names, which provides additional programming information.

Each system has its own advantages. System A used to be the universal standard, but System C is quickly growing in popularity. Choose the one that suits you best and stay with it.

## Names You Must Never Use

A programmer once came up with a brilliant way to avoid ever getting a traffic ticket. He submitted a request for a personalized license plate with the choices “000000”, “111111”, and “110011”. He figured that if his license plate read “000000”, the police would find it difficult to tell the difference between the letter “O” and the digit “0”. The problem was, the DMV clerk had the same problem, so he got a personalized license plate that read “000000”.

The uppercase letter “O” and the digit “0” can easily be confused. So can the lowercase letter “l” and the digit “1”.

### **Rule 3-3:**

*Never use l (lowercase L) or O (uppercase O) as variable or constant names.*

## Other Names Not To Use

Don't use names already in the C library. You'll never know who calls them. I recently ported a program that defined its own version of *getdate*. The program worked under UNIX because although the C library has a *getdate* function, the program never expected to use it.

When the application was ported to the PC, I discovered that *getdate* called the library function *time*. This function had an internal call to *getdate*. It expected to call the system *getdate*, not a local function defined in the program. But the program overrode the library's *getdate*, which resulted in *getdate* calling *time* calling *getdate* calling *time*—until the stack overflowed.

A quick global rename was done to turn *getdate* into *get\_current\_date*, and the porting problem went away. But it would have never occurred in the first place if the programmer hadn't used an existing C library function:

**Rule 3-4:**

*Don't use the names of existing C library functions or constants.*

## Avoid Similar Names

Subtle differences in variable names should be avoided. For example, the variable names `total` and `totals` can be easily confused. Differences between variables should be blatant, such as `entry_total` and `all_total`.

**Rule 3-5:**

*Don't use variable names that differ by only one or two characters. Make every name obviously different from every other name.*

## Consistency in Naming

Consistency and repetition are extremely powerful programming tools. Use similar names for similar functions. In the following example, you can easily guess the name of the missing variable:

```
int start_hour;    /* Hour when the program began */
int start_minute; /* Minute when the program began */
int ??????;      /* Second when the program began */
```

If `start_hour` is the hour when the program began and `start_minute` is the minute, you can easily figure out the name of the variable that holds the seconds. Think how confusing it would be if the programmer had written this:

```
int start_hour;    /* Hour when the program began */
int begin_minute; /* Program start time. minutes only */

/* Seconds on the clock at program commencement */
int commence_seconds;
```

**Rule 3-6:**

*Use similar names for variables that perform similar functions.*

## Which Word First

Suppose you have a variable that denotes the maximum entry in a series of numbers. You could call it `max_entry` or `entry_max`. How do you decide which name to use?

Picking one at random does not work, because you might at one time pick `max_entry` for one program and `entry_max` for another. Experience shows that too often we forget which one we picked for a particular program, which results in confusion. More often than I care to mention, I've had to do a global search and replace to change `max_entry` to `entry_max`.

You need a selection rule. What happens when you put the most important word first (in this case, entry)? A cross reference listing will group all the entry related variables together, such as (entry\_count, entry\_min, entry\_mmax).

If you choose to begin with the word max. then all the maximum limits will be grouped together (max\_count, max\_entry, max\_list).

Sorting by an important relation (all variables related to entries) is more important than sorting by type (all maximums).

### **Rule 3-7:**

*When creating a two word variable name where the words can be put in any order, always put the more important word first.*

## **Standard Prefixes and Suffixes**

Over the years a few standard prefixes and suffixes have developed for variable names. These include the following:

`_ptr` Suffix for pointer

Examples:

```
int *entry_ptr; /* Pointer to current entry */
char *last_ptr; /* Pointer to last char in str */
```

`_p` Another suffix for pointer. This can be a little confusing to people who are not familiar with it, so the suffix `_ptr` is preferred.

Examples:

```
event *next_p; /* Pointer to next event in queue */
char *word_p; /* Pointer to start of next word */
```

`_file` A variable of type `FILE *`, or a C++ I/O stream.

Examples:

```
FILE *in_file; /* Input data file */
FILE *database_file; /*Where we put the database */
```

`_fd` File descriptor (returned by the open function.)

Examples:

```
/* The dictionary file descriptor */
int dictionary_fd;

/* File where we put the memory dump */
int dump_fd;
```

`n_` Number of. For example, if you store a set of events in the array `events`, the `n_events` is the number of entries in the `events` array. Does this violate the rule about putting the most important word first? Yes, but it's established usage.

Examples:

```
/* A list of events */
int events[EVENT_MAX];

/* Number of items in event array */
int n_events = 0;

/* A list of accounts */
struct account account;

/* Number of accounts seen so far */
int n_accounts = 0;
```

**Rule 3-8:**

*Standard prefixes and suffixes are `_ptr`, `_p`, `_file`, `_fd`, and `n_`.*

## Module Prefixes

When creating large modules or libraries (more than 10 functions), a prefix is sometimes added to each variable and function in the library. For example, everything in a database library might start with the prefix `Db`.

Example:

```
int DbErrorNumber;
extern int DbOpen(char *name);
extern int DbClose(int handle);
```

This serves two purposes: first, it identifies the module containing the name; and second, it limits name conflicts. A symbol table module and a database both might have a lookup function, but the names `SymLookup` and `DbLookup` do not conflict.

The X Windows system uses this naming convention extensively. All X Windows functions begin with the letter X. However, the system is so complex that it has been further divided into “tool kits,” each of which has its own prefix. For example, `Xt` is the Andrew Tool kit, `Xv` is the X-view tool kit, etc.

## Special Prefixes and Suffixes

Sometimes you need to use special names, names that you can be sure don't conflict with a large body of existing code. Such cases call for unusual naming conventions.

For example, the C preprocessor had been around a number of years before the ANSI Committee decided on a standard set of predefined symbols. In order to avoid conflict, they decided that each symbol would look like this: `(__SYMBOL__)`.

Some of the predefined symbols include:

\_\_LINE\_\_ \_\_FILE\_\_ \_\_STDC\_\_

Compiler manufacturers have now jumped on this bandwagon and defined their own special symbols using this convention.

The utilities `lex` and `yacc` solve the naming problem in a different way: they begin everything with `yy`. Thus we get names like `yylex`, `yytext`, and `yylength` in the code generated by these utilities. It may look a little strange at first, but after a `yywhile` `yyou` `yyget` `yyused` to it.

If you do need to define a name that's widely used and you want to minimize the possibility of a naming conflict, begin it with an underscore (`_`). Very few programmers use this character at the beginning of normal variable or constant names.

## When You Can Use Short Names

In some cases you can use short variable names. For example, when dealing with a graphic position, the variables `x` and `y` are descriptive.

Also, the variable named `i` is frequently used as a general purpose, handy dandy, local index. Its popularity makes it acceptable as a variable name, even though the name `index` is more descriptive.

### **Rule 3-9:**

*Short names such as `x`, `y`, and `i` are acceptable when their meaning is clear and when a longer name would not add information or clarity.*

## **argv, argc**

The main function of a C program takes two arguments. In 99 percent of the programs, the arguments are named `argv` and `argc`. In the other 1 percent, we wish the programmer had used `argc` and `argv` instead of `ac` and `av`.

A lot of history has gone into these names. When programmers see them, they immediately think “command line arguments.” Don't confuse the issue by using these names for anything else.

### **Rule 3-10:**

*Use `argc` for the number of command line arguments and `argv` for the argument list. Do not use these names for anything else.*

## Microsoft Notation

When Microsoft introduced Windows, it also introduced a new variable naming notation called Hungarian Notation. (There are two reasons why it's called that. First, Charles Simonyi, the man who invented it, is Hungarian. Second, most people looking at it for the first time think that it might as well be written in Hungarian.) It's also known as Microsoft Notation.

The idea is simple: prefix each variable name with a letter denoting its type; for example, `w` for a 16-byte integer (**word**), and `l` for a 32-byte integer (**long**). That way, you can easily prevent programming problems caused by type conflicts. For example:

```
wValue = lParam; /* Obvious type conflict */
```

There is no complete list of prefixes. The following was gathered from several sources:

Prefix	Type
b	Boolean (true or false)
w	Word, 16-bit integer
i	Integer, 16-bit integer (conflicts with w)
n	Short, 16-bit integer (conflicts with w)
n	Near pointer (ambiguous, can be used for “ <b>short</b> ”)
p	Pointer
d	Double, 32-bit integer
dw	Double word, 32-bit integer (conflicts with d)
l	Long, 32-bit integer (conflicts with d)
fn	Function (or pointer to function)
g	Global
s	String
sz	String terminated with zero (conflicts with s)
c	character
by	byte (unsigned character)
h	Window handle
hn	Window handle (conflicts with h)

There are some problems with this notation. First, the list of prefixes is confusing and incomplete, and the order of prefixes is not clear. For example, does a pointer to a word start with `pw` or `wp`?

Second, variables with type prefixes get sorted by type in the cross reference, which is not the most useful ordering.

Of course, sometimes a programmer really needs to put type information into a variable name. For example, it's very important to know the difference between things and pointers to Wings. The suffix `_ptr` does this job well.

Example:

```
char name[30]: /* Name of the user */
char *name_ptr: /* Pointer to user's name */
```

Suffixes easily do the job of Microsoft's prefixes without getting in the way. The only advantage of Microsoft Notation is that it makes type conflicts obvious. For example:

```
wValue = lParam: /* Obvious type conflict */
```

However, most good compilers will produce a warning message for potential problems like this. So while it may be hard to spot the potential problem in the following line:

```
count = index:
```

it's a lot easier when the compiler chimes in with:

```
Line 86: Warning: Assignment may lose significant digits
```

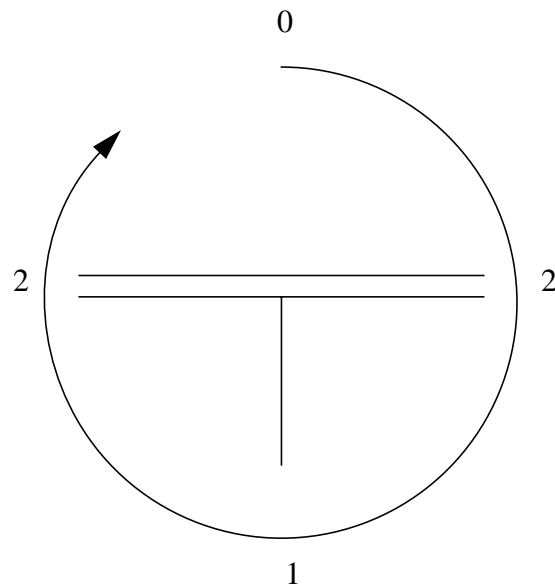
## Imaginative Solutions

PC class machines come with a line drawing character set that allows the programmer to construct things like single and double lined boxes. One of the problems PC programmers face is what to name these curious characters when they are referred to in a program. One solution is to begin every single line character with S, followed by the character type: C for corner, L for line, T for T and X for cross, followed by a name. The result is:

Character	Name
⌋	S_C_UR (Single, Corner, Upper Right)
⌈	S_C_UL (Single, Corner, Upper Left)
⌒	S_C_LR (Single, Corner, Lower Right)
⌑	S_C_LL (Single, Corner, Lower Left)
—	S_L_A (Single, Line, Across)
	S_C_UR (Single, Line Down)
≠	SD_X_DA (Single Down, crossing Double Across)

After a while this system tends to make you sick. The problem with this system is that it's complex and somewhat error prone. At the time it was the best we could come up with, but that didn't stop us from trying something new.

Then someone figured out a system where you started at the top and worked your way around, counting the number of lines (0, 1, or 2).





So the character turns into L\_0212. The table is now:

Character	Name
┘	L_0011
└	L_0110
┌	L_1001
┐	L_1100
_	L_0101
	L_1010
≠	L_1212

Now, these names break all the rules we have discussed so far. They are short and somewhat cryptic. But put them in a file with a very good comment block explaining them, and they bring order to a very messy problem.

## Case studies

Over the years different groups have developed their own standard naming conventions. Each has its own advantages and disadvantages. This section will look at some of the standard programs and how they use their names.

### The C runtime library

The C runtime library traces its roots back to the first C compiler. It evolved over the years, and the ANSI Committee standardized it.

#### Naming conventions:

Private variable names	All lowercase
Public variable names	All lowercase
Constant names	Uppercase only

The C library is full of short, cryptic names like these:

<code>creat</code>	<code>stdin</code>	<code>stdout</code>	<code>open</code>
<code>strcpy</code>	<code>printf</code>	<code>memcpy</code>	<code>malloc</code>

Initially names were restricted because of severe limitations in the compiler, which ran on some extremely small machines. Also, the early programmers didn't place any value on long names.

These names are somewhat cryptic. For example, the function `strcpy` copies a string. A much better name would have been `string_copy`. And using `creat` instead of `create` is pretty silly.

The language does not make good use of prefix and suffix letters. For example, here is the *printf* family of functions:

<i>printf</i>	Print to standard output
<i>fprintf</i>	Print to a file

<i>sprintf</i>	Print to a string
<i>vfprintf</i>	Print to a file, argument list is a vector

Also, the library is fairly consistent. For example, every string function *str...* has a corresponding *strn...* function.

Example:

<i>strcpy</i>	copy a string
<i>strncpy</i>	copy n characters of a string
<i>strcat</i>	append one string to another
<i>strncat</i>	append n characters of one string to another

Constant names are also somewhat cryptic. For example, some of the error codes (from standard library *errno.h*) are:

```
#define EZERO    0    /* Error 0 */
#define EINVFN  1    /* Invalid function number */
#define ENOFILE  2    /* File not found */
#define ENOPATH  3    /* Path not found */
#define ECONTR   7    /* Memory blocks destroyed */
#define EINVMEM  9    /* Invalid memory block address */
```

However, the C library is good about grouping similar constants together. All error numbers begin with E, all open flags begin 0\_, and so on.

All in all, the C library is fairly well designed; and the naming, though short, is regular and reasonable, with limitations tractable to the days when C compilers were much more limited.

## The UNIX kernel

The UNIX operating system was one of the very first to be written in a high level language. It was the first to be widely ported. Today, almost every computer that's not a PC clone runs UNIX.

### Naming Conventions

Private variable names	All lowercase
Public variable names	All lowercase
Constant names	Uppercase only

UNIX is the king of the 1 to 3 character variable names. Some typical names are:

```
u    bp    i    bn
pid  uid  gid  fd
```

After a while, UNIX operating system programmers learn the meaning of most of the abbreviations. They know that `pid` stands for process id and `bp` is a buffer pointer. But it takes time and effort to learn this code. In fact, UNIX internal programming is not for the inexperienced or the faint of heart. Most programmers must be introduced into the world of UNIX internals by an experienced guru.

As UNIX evolved, more and more people added to its code. While the core of the system remains cryptic, much of the new code is better. Longer variable names came into use, such as:

```
physical_io      dispatch
signal          tty_select
```

## The Microsoft library

Microsoft Windows provides PC programmers with a graphics programming environment. It also allows programmers to better use the power of the more advanced 80386 and 80486 processors.

### Naming conventions:

Private variable names	Up to the application programmer
Public variable names	Upper and lowercase
Constant names	Uppercase only

Function names in Microsoft Windows are nicely done, consisting of several words put together. Examples:

```
GetFreeSpace      UnlockSegment     CreateBitmap
CloseClipboard    GetWindow         AppendMenu
```

However, there is no special prefix or suffix for Windows functions, so it's impossible to tell at a glance whether or not `OpenFile` is a Windows function. Constants are all Uppercase.

Examples:

```
LB_SETSEL          WM_MOUSE          WM_MOVE
WM_CLOSE           EN_UPDATE        LB_MSGMAX
```

Each constant contains a short group prefix. For example, all “List box” related constants begin with `LB_`. Almost all Windows constants contain only one “\_”, which is used to separate the prefix from the rest of the constant. Multiple words are run together, making it difficult to read. Therefore a constant like `WM_WINDOWPOSCHANGED` would be much more readable if it was written as `WM_WINDOW_POS_CHANGED`.

In general, the Windows naming convention makes programs more readable than the UNIX code or C library. Although not perfect, it is a step forward.

## The X Windows System

The X Windows is a popular UNIX windowing system available from MIT. Its low cost and relative availability make it the windowing system of choice for most UNIX systems.

### Naming conventions:

Private variable names	Up to the application programmer
Public variable names	Uppercase and lowercase
Constant names	Most Uppercase only, some upper and lowercase

One of the most refreshing things about X Windows programming is that it actually looks like someone thought about the design and style of the system before beginning the coding.

Public function and variable names in X Windows are upper and lowercase words, with no underscores.

Examples:

```
XDrawString      XNextEvent      XGrabPointer
XCreateGC        XMapWindow      XFlush
```

All public names start with the letter X. The programmer can select among many different tool kits for code. Each of these has its own prefix. For example, all routines in the X-View tool kit start with Xv.

Constants begin with a type prefix. For example, all button related constants begin with `BUTTON_`. Constants are a series of words separated by underscores.

```
XA_POINT          XA_BITMAP        XA_ATOM
XrmOptionNoArg    XSetSizeHints    Focusin
```

The X Windows system shows what can happen when some thought is given to style before coding begins. It is well designed and presents the programmer with one of the best interfaces available.

## Variable Declaration Comments

Choosing good variable names helps create programs that are easy to read and maintain. But names can't do the job alone. The programmer needs a definition for each variable. Technical books have glossaries that explain all the special terms. We also need a glossary for our programs.

Writing a glossary is a lot of work. Maintaining it and keeping it up to date is even more work. A better solution is to follow each variable with a comment that describes it.

Examples:

```
int window;      /* Current window index */
int words;       /* Number of words in the document */
int line_number; /* Current input file line number */
char *in_name;   /* Current input file name */
```

Now, if you want to know the definition of `line_number`, go to your cross reference and look for the first reference to the variable, thus locating the line:

```
int line_number; /* Current input file line number */
```

Using this method, you can quickly determine the type and definition of any variable.

### **Rule 3-11:**

*Follow every variable declaration with a comment that defines it.*

## Units

Weather services generally measure rainfall in hundredths of inches, referring to half an inch of rain as 50. However, one night the weather service computer used inches as input. Someone forgot a decimal point and entered 50 instead of 0.50.

Now, 50 inches of rain is a lot of rain. The computer caught the effort and printer this message:

```
Build an Ark. Gather the animals two by two.
```

Units of measure are important. It's one thing to describe dist as the distance between two objects, but what are the units? They could be inches, centimeters, yards, meters, or light years. It makes a difference.

**Rule 3-12:**

*Whenever possible, include the units of measure in the description of a variable.*

Examples:

```
int distance-left; /* Distance we've got left (in miles) */
int owed;        /* Amount owed in current account (in cents) */

/* Acceleration of gravity (in furlongs/fortnight**2) */
float gravity;
```

I once had to write a graphics conversion program. Many different units were used throughout the system, including inches, thousandths of an inch, plotter units, digitizer units, etc. Figuring out which units to use was a nightmare. Finally, I gave up and put the following comment in the program:

```
/* *****
 * Warning: This program uses a lot of different types *
 *         of units. I have no idea what the input units *
 *         or nor do I have any idea what the output   *
 *         units should be, but I do know that if you   *
 *         divide by 3 the plots look about the right size.*
 * ***** */
```

## Structures and unions

A structure is simply a group of related variables tied together to form a convenient package. Each field in a structure should be treated like a variable, with a carefully chosen name. A descriptive comment is necessary as well.

Example:

```
/*
 * A square of space on the screen enclosed by
 * a border
 */
struct box {
    int x;          /* X loc. of upper left corner (in pixels) */
    int y;          /* Y loc. of upper left corner (in pixels) */
    int length;     /* Length of the box in pixels */
    int width;      /* Width of the box in pixels */
};
```

The structure itself is described in a comment just before its definition. This example uses a multi-line comment to describe the box. Single-line comments tend to get lost in the clutter. White space before and after the definition separates the structure from the rest of the code (much like blank lines separate paragraphs in this book).

**Rule 3-13:**

*Name and comment each field in a structure or union like a variable.*

**Rule 3-14:**

*Begin each structure or union definition with a multi-line comment describing it.*

**Rule 3-15:**

*Put at least one blank line before and after a structure or union definition.*

## Long declarations and comments

Sometimes a variable declaration and its initializer leave little room for a comment. In the following example, we need to describe *last\_entry*, but where do we put the comment?

```
int first_entry;          /* First entry to process */
int last_entry = (GOOD-ENTRIES + BAD-ENTRIES + FUDGE);
int current_entry;       /* Entry we are working on */
```

There's no room at the end of the line. The solution is to put the description on a separate line in front of the variable:

```
int first_entry;          /* First entry to process */
/* Last entry number to process */
int last_entry = (GOOD-ENTRIES + BAD-ENTRIES + FUDGE);
int current_entry;       /* Entry we are working on */
```

But this is still not good enough. This section of code looks like a big gray blob. It's not easy to locate the description for *last\_entry*. Adding white space not only breaks up the blob, it also helps group *last\_entry's* comment and declaration as shown here:

```
int first_entry;      /* First entry to process */

/* Last entry number to process */
int last_entry = (GOOD-ENTRIES + BAD-ENTRIES + FUDGE);

int current_entry;   /* Entry we are working on */
```

**Rule 3-16:**

*When you can't put a descriptive comment at the end of a variable declaration, put it on a separate line above. Use blank lines to separate the declaration/comment pair from the rest of the code.*

**Group similar declarations**

Repetition and consistency are powerful organizing tools. When declaring variables, group similar variables together and use similar names.

```
int errors_out;      /* Total number of output errors */
int errors_in;       /* Total number of input errors */

int max_out;         /* Max output error rate (errors/hour) */
int max_in;          /* Max input error rate (errors/hour) */

int min_out;         /* Min output error rate (errors/hour) */
int min_in;          /* Min input error rate (errors/hour) */
```

This example uses the prefix *errors\_* for the counters that accumulate a running total of the input/output errors. The variables that hold the limits start with the fixes *max\_* and *min\_*. Common suffixes are also used. All output-related variables end with *\_out*, and input variables with *\_in*.

Notice that each group of variables consists of two declarations, the first one for the output and the second one for the input.

This example shows only one of several possible groupings. Another possible method is this:

```
int errors_out;      /* Total number of output errors */
int errors_in;       /* Total number of input errors */

int max_out;         /* Max output error rate (errors/hour) */
int max_in;          /* Max input error rate (errors/hour) */

int min_out;         /* Min output error rate (errors/hour) */
int min_in;          /* Min input error rate (errors/hour) */
```

**Rule 3-17:**

*Group similar variables together. When possible, use the same structure for each group.*

## Hidden Variables

Hidden variables occur when a variable is declared in a global scope and is then declared again in a local scope. The second declaration “hides” the first.

In the following example, the second declaration of location hides the first.

```
/* Bad programming practice */

/* Distance traveled by the car in miles */
float location;

/*..... */
void display_location(void)
{
    /* Location of current cursor */
    int location;    /* *** Hides previous declaration *** */
}
```

The problem is that we've now used the same word for two different things. Is location a global or a local? Is it a **float** or an **int**? Without knowing which version of the variable is being referred to, we can't answer these questions.

There are enough variable names in the universe that there's no reason to use the same name twice. We could just as easily have used a different name for the second declaration:

```
/* Good programming practice

/* Distance traveled by the car in miles
float car_location;

/*..... */

void display_location(void)
{
    /* Location of current cursor */
    int cursor_location;
}
```

### **Rule 3-18:**

*Don't use hidden variables.*

## Portable Types

The C compiler runs on many different machines. Making portable programs that can run on all these machines is an art. One trick used to define portable types. For example, Novell uses the type **WORD** and **DWORD** in all its header files. But what is a **WORD**? Is it 8, 16, or 32 bits? Is it signed or unsigned? You can't tell from the name.



A better set of portable names is:

```
INT16    INT32
UINT16   UINT32
```

These names clearly define the type and size of the data.

**Rule 3-19:**

*Use the names INT16, INT32, UINT16, and UINT32 for portable application*

## Numbers

C uses a wide variety of numbers, and it's easy to get them confused. Be careful to make numbers clear and unambiguous.

### Floating-point numbers

Here are some examples of floating-point numbers:

```
0.5      .3      6.2      10.
32E4     1e+10   0.333331  5E-5
```

A zero in front of the decimal point is optional. For example, C treats 0.8 and .8 same. But there is a difference. .8 looks a lot like the integer 8, while the number 0.8 is obviously floating-point. Similarly, you should write numbers like 5. as 5.0.

**Rule 3-20:**

*Floating-point numbers must have at least one digit on either side of the decimal point.*

Large floating-point numbers are written using exponent format. The exponent's "E" can be written in upper or lowercase. Which is better? Well, all digits are full-height characters. The uppercase E is also a full-height character and can easily get lost in a string of digits.

```
321418312354321E132809932
```

The E is important and shouldn't get lost. The lowercase is easier to spot:

```
321418312354321e132809932
```

It's even easier if you always include the sign.

```
321418312354321e+132809932
```

So a lowercase e and a sign make these important elements of a floating-point number stand out.

**Rule 3-21:**

*The exponent in a floating-point number must be a lowercase e. This is always followed by a sign.*

Here are some examples of good floating-point numbers:

3.1415	3.0	0.5	0.0
1.0e+33	1.0e-333.	33.0	1230.0

## Hex numbers

C uses the prefix `Ox` for hexadecimal numbers. A uppercase or lowercase `x` may be used, but as discussed, lowercase letters stand out better.

### **Rule 3-22:**

*Start hexadecimal numbers with `Ox`. (Lowercase `x` only.)*

Hexadecimal digits include the letters A through F. Again, uppercase or lowercase may be used, so `OXACE` is the same as `OXace`. Lowercase digits create numbers that are easily confused with variable names. Uppercase digits create numbers that look like constants.

<code>0xacde</code>	<code>ace</code>	<code>face</code>	<code>0Xdead</code>
<code>0xACE</code>	<code>X_ACE</code>	<code>BEEF</code>	<code>0xBEEF</code>

Numbers are a type of constant, so confusing a number and a constant is not too problematic. Mistaking a number for a variable is worse, so it is preferable to use uppercase digits.

### **Rule 3-23:**

*Use uppercase A through F when constructing hexadecimal constants.*

## Long integers

Long integers end with the letter L. Again, C is case insensitive, so lowercase can be used. But lowercase `l` looks a lot like the number 1 and should be avoided. For example, the following two constants look very much alike:

<code>34l</code>	<code>34l</code>
------------------	------------------

But when the long integer is written using an uppercase L, the confusion clears up:

<code>34L</code>	<code>34l</code>
------------------	------------------

### **Rule 3-24:**

*Long constants should end with an uppercase L.*



## Chapter 2: File Basics, Comments, and Program Headings

To program some of the very early computers, programmers had to rewire the machine. The programmers got a large circuit board called a plug board, which was filled with little holes where they plugged in wires to create the program. Once they had programmed the board, they slid it into the computer and ran the program.

Computers soon evolved to the point where programmers could program them in text. They typed their program on a machine that output punched cards, dropped the thick deck of cards into the card reader, and the computer did the rest. Editing the program was as simple as replacing cards, but woe be to the programmer who dropped the program and scattered the cards.

Today we use text editors, which are certainly an improvement over punched cards and plug boards, but they do have their limitations. Knowing these limitations can help you to write code that will always be readable.

### File Basics

C can accept files of almost any size, but there are some practical limitations. The longer a file, the more time and effort it takes to edit and print it. Most editors tend to get a bit slow when the file size gets to be more than about 3,000 lines. Keep yours within this limit.

#### ***Rule 2-1:***

*Keep programs files to no longer than about 2,000 to 3,000 lines.*

Not only are there length limitations, but width limits as well. The old punch cards contained 80 columns. Because of that, most terminals and printers at the time were limited to 80 columns. This limitation has carried over to present-day computers. For example, the PC screen is only 80 columns wide.

Long lines can be a problem in programming. Many printers truncate lines that are too long, resulting in listings that look like this:

```
result = draw_line(last_x, last_y, next_x, next_y, line_style, end_style,
```

The code that fell off the right side is referred to as mystery code. So you need to limit the width of your program files to 80 characters. Actually, you need a slightly smaller limit. Program printers such as *cpr* print line numbered listings. Line numbers take up space, so a better limit, and one with enough history to be taken seriously, is 72 characters.

#### ***Rule 2-2:***

*Keep all lines in your program files down to 72 characters or fewer.*

Early terminals had fixed tabs. Every eight characters you had a tab stop whether you liked it or not. You couldn't change them since they were built into the machine. This fixed tab size became an industry standard that is still in force today. If you type a file containing tabs under UNIX or DOS, the tabs come out every eight characters.

Many editors allow you to set your own tab stops. If you are programming in C with an indentation size of 4, it is convenient to set the tab stop in your editor to 4. That way, to indent all you have to do is hit the Tab key. The problem with is that your tab setting is non-standard. If someone else edits your program, they won't know about your tabs and will assume that your code is indented strangely. Also, many printing programs and older programs default to a tab size of 8. Some, like DOS, can't be changed.

Note that tab size and indentation level are two different things. It is perfectly acceptable to use a tab size of 8 and an indentation level of 4. You would then use four spaces to reach the first level of indentation, a tab to reach the second, and so on.

### **Rule 2-3:**

*Use 8-character tab stops.*


Finally, there is the character set. There are 95 printing characters in the standard ASCII set. The PC extended this set to include foreign characters and a line drawing set. It is possible to use the PC character set to draw interesting shapes,

like the following example:

```

/*****
* Boxes look like
*
*
*
*
*
*****

```



This makes for a nice picture on the screen, but what happens when you try to print it out? Most printers don't understand the PC character set, so you can easily get something that looks like this:

```

/*****
* Boxes look like
*  LQQQQQQQQQQQQQQQQQQQQQQQQQQQQQQQQQQQQQQQL
*  M
*  M
*  LQQQQQQQQQQQQQQQQQQQQQQQQQQQQQQQQQQQQQQQL
*****

```

Worse, if this program is ported to another machine, such as a UNIX system, no one will understand the funny characters.

**Rule 2-4:**

*Use only the 95 standard ASCII characters in your programs. Avoid exotic characters. (Foreign characters may be used if you are writing comments in a foreign language.)*

## The Comment

Well-written code can help a programmer understand what is going on, but the best form of communication is the comment. Comments are used to explain everything. Without comments, a programmer has to go through the long and painful process of decrypting the program to figure out what the heck it does.

The comment can convey a variety of information, including program design, coding details, tricks, traps, and sometimes even jokes. There are many types of comments, from important ones that you want make sure the programmer doesn't miss to explanations of the tiniest details.

The author of a book has the advantage of typesetting devices. Important information can be set in **BIG BOLD LETTERS**, or words can be *emphasized* with italics.

The programmer, on the other hand, is limited to a single size, single face, monospaced font and personal imagination. Over the years a lot of imagination has been used to make up for the limitations of the medium.

**Rule 2-5:**

*Include a heading comment at the beginning of each file that explains the file.*

The following program illustrates a variety of commenting styles collected over the years from many different sources.







## Packing bits

If you do I/O programming, you know that hardware designers like to pack a lot of functions into a single byte. For example, the serial I/O chip that controls the COM ports on a PC contains a variety of packed registers.

Mode	Break		Parity		Stop	Stop Bits
------	-------	--	--------	--	------	-----------

Parity:

```
000 - No parity
001 - Odd Parity / No Check
010 - Even Parity / No Check
011 - High Bit always set
100 - Odd Parity / Check Incoming characters
101 - Even Parity / Check Incoming characters
110 - Undefined
111 - Parity Clear
```

Stop Bits:

```
00 - 1 Stop Bit
01 - 1.5 Stop Bits
10 - 2 Stop Bits
11 - Undefined
```

These registers are documented in the chip's data sheet. Unfortunately, most programmers don't carry around a complete set of data sheets, so it is very useful to copy the register specification into the

This can be turned into a nice comment and a few defines. (How to write the **#define** statements is discussed in Chapter 6.)

```

/*****
 * Line Control Register                                     *
 *   for the PC's COM ports                               *
 *                                                       *
 *       76543210                                         *
 *       XXXXXXXX                                         *
 *       ^^^^^^+---- Number of stop bits                 *
 *       |||||+----- Enable Transmitter               *
 *       ||+++----- Parity Generation                 *
 *       |+----- Send Break                           *
 *       +----- Mode control                           *
 *****/

/*
 * Define the number of stop bits
 */
#define STOP_1_BIT      (0 << 0)
#define STOP_15_BIT    (1 << 0)
#define STOP_2_BIT     (2 << 0)

#define TRANSMIT_ENABLE (1 << 2)
/*
 * Parity Mode
 */
#define PARITY_NONE     (0 << 3)
#define PARITY_ODD      (1 << 3)
#define PARITY_EVEN     (2 << 3)
#define PARITY_HIGH     (3 << 3)
#define PARITY_ODD_CHECK (4 << 3)
#define PARITY_EVEN_CHECK (5 << 3)
#define PARITY_CLEAR    (7 << 3)

#define BREAK          (1 << 6)

#define MODE_ASYNC     (0 << 7)
#define MODE_SYNC      (1 << 7)

```

## Letting the Editor Help You

Most editors have a macro of abbreviation features that make it quick and easy to create boxed comments.

If you use the UNIX editor *vi*, you can put the following in your *exrc* file to define two abbreviations:

```
:ab #b /*****  
:ab #e *****/
```

When you type *#b*, the editor changes it to a beginning box, while typing *#e* creates an ending comment.

On the PC, there is Borland's C++ compiler, which comes with a macro file named *CMACROS.TEM*. These macros must be installed using the *TEMC* command. Type:

```
TEMC cmacros.tem tcconfig.tc
```

These macros are a bit limited, however, and you might want to edit them before using them in production.

## Beginning Comment Block

The first two questions a programmer should ask when confronting a strange program are “What is it?” and “What does it do?” Heading comments should answer both questions.

The top of a program serves as a sort of title page and abstract. It briefly describes the program and provides vital information about it.

Here, the heading comments are boxed. This not only makes them stand out, but it easily identifies them as containing important and generally useful information. The first line of the heading block contains the name of the program and a short description of what it does.

### The sections of a heading

The following is a list of heading sections, but not all sections apply to all programs. Use only those that are useful to your program.

- **Purpose**

Why was this program written? What does it do?

- **Author**

it took you a great deal of time and trouble to create this program. Sign your work. Also, when someone else has to modify this program, they can come to you and ask you to explain what you did.

- **Copyright or License**

Most commercial programs are protected by copyright or trade secret laws. Generally, this is some boilerplate text devised by lawyers. You don't have to understand it, but you should put it in.

- **Warning**

Sometimes a programmer discovers the hard way that his program contains traps or pitfalls. This section should warn about potential problems. For example: “Don't compile with stack checking on. This is a clever program, and it does strange things with the stack.”

- **Usage**

Briefly explain how to use the program. Oualline's law of documental states: 90 percent of the time, the documentation is lost. Of the remaining 10 percent, 9 percent of the time the documentation is for a different version of the software and is completely useless. The 1 percent of the time you have the correct documentation, it is written in Chinese.

A simple way to prevent the program and the documentation from being separated is to put the documentation in the program. You don't need a complete tutorial, just enough for a quick reference.

- **Restrictions**

This section lists any restrictions that the program might have, such as “This program is designed to process the output of PLOT5 program. It does not do extensive error checking and may behave strangely if given bad input.”

- **Algorithms**

If this program uses any special techniques or algorithms, list them here.

- **References**

Often a programmer will find it useful to copy or adapt an algorithm from a book or other source (as long as copyright laws are not violated). But give credit where credit is due. Listing the source of any special algorithms in this section gives the people who follow you a chance to check the original work.

- **File Formats**

This section briefly describes the format of any data files used by the program. This section may also be duplicated in the module that reads or writes the file.

- **Revision History**

it's not unusual for a number of people to work on a single program over the years. This section lists those who worked on the program, gives a short description of what they did, and tells when the work was done. Revision control software such as *RCS* and *SCCS* will automatically generate this information.

- **Notes**

This is a catch-all for any other information you may want future programmers to have.

```
/*
 * Analyze -- analyze the complexity of a program
 *
 * Purpose:
 *     This program produces a set of statistics that
 *     are supposed to tell you how complex a program
 *     is.
 *
 * Author: John Jones.
 *
 * Copyright 1999 by John Jones.
 *
 * Warning: Compiling with optimization causes
 *     incorrect code to be generated.
 *
 * Restrictions: Works only on error-free C files.
 *     Does not know about pre-processor directives.
 *
 * Algorithms: Uses a classic unbalanced binary tree
 *     for a symbol table.
 *
 * References: "Software complexity measurements",
 *     Flying Fingers Newsletter, May 5, 1995.
 *
 * Output file format for raw data file:
 *     <magic number> (AC_DATA_MAGIC)
 *     <# statistics that follow>
 *     <stat table index>
 *     <value>
 *     (Repeat for each stat.)
 *
 * Revision history:
 *     1.0 July 5, 1995      Ralph Smith
 *         Initial Version.
 *
 *     1.5 Nov 5, 1995      Bill Green
 *         Add comment / code ratio
 *
 *     2.0 Jan 8, 1996      Bill Green
 *         Extensive rework of the report gen.
 *
 */
```

```

*      2.1 Jan 30, 1997      Bill Green      *
*      Ported to Windows-95.      *
*      *
* Note: This program generates a lot of numbers      *
*      about the target program.  Not all are useful.  *
*****/

```

This particular example is a bit long. It was created to show practical uses of every section. But it illustrates a problem with style guidelines: there is a strong temptation to overdo it. All too often, a programming team will form a style committee, toss around a bunch of ideas for documenting the code, and end up throwing them all into the header. This is almost guaranteed to produce confusing headers that are themselves a maintenance headache.

Heading comments should be as simple as possible, but no simpler.

Too much information is a burden on the programmer. It takes time to type it in and to maintain it. Comments that take a lot of time to create and maintain tempt the programmer to take shortcuts. The result is incorrect or misleading comments, and a *wrong comment is worse than no comment at all*.

Real programs have shorter headers. Here is a header taken from a real program:

```

/*****
* lab -- handle the labeling of diskettes.      *
*      *
* Usage:      *
*      lab -w <drive>:<name>      Write label to disk.      *
*      lab -r <drive>:      Read label.      *
*      lab -c <drive: drive:      Copy label.      *
*      *
* Copyright 1992, Steve Oualline      *
*****/
#include <stdio.h>

```

## Other sections

We've listed a general set of heading sections. You may need additional sections, depending on your environment. For example, a student may be required to put in an assignment number, social security number, and teacher's name. Professional programs may require a part number. Shareware must include a paragraph that asks the user to pay a license fee, along with an address to which users can send money.

## Module Headings

Modules are similar to program files, except that there is no main function. Their heading comments are also structured similarly, except that there is no "Usage" section.

```
/*
 * symbol.c -- Symbol table routines
 *
 * Author: Steve Oualline
 *
 * Copyright 1992 Steve Oualline
 *
 * Warning: Running out of memory kills the program.
 *
 * Algorithm:
 *     The symbol table is kept as a balanced binary
 *     tree.
 */
```

Some programmers put a list of the public functions in the heading comments. This is not recommended. First, all the public functions are already listed in the header file for this module. Second, keeping this list up to date requires work, and frequently a programmer will forget to make the updates.

## Function Headings

C functions serve much the same purpose as sections of a chapter in a book. They deal with a single subject or operation that the reader can easily absorb.

In this book, each section starts with a section heading in bold letters. This allows the user to scan down a page to locate a section.

A function needs a similar heading. The comment box for a function should contain the following sections:

- **Name**

The name of the function and a brief comment describing it.

- **Parameters**

A list of parameters (one per line) and a brief description of each of them. Sometimes the words (returned) or (updated) are added.

- **Return value**

Describes what value the function returns. In addition to these standard sections, any other useful information about the function can be added. Here's an example:

```
/*
 * find_lowest -- find the lowest number in an array
 *
 * Parameters
 *     array -- the array of integers to search.
 *     count -- the number of items in the array.
 *
 * Returns
 *     The index of the lowest number in the array
 *     (in case of a tie, the first instance of the
 *     number.)
 */
```

Some people include another section: *Globals Used*. This is very useful information, but it is difficult to get and maintain. It takes a lot of work to keep this section current, and frequently a programmer will get lazy and ignore it. It is better not to have a *Globals Used* section than to have one that is wrong.

**Rule 2-6:**

*Leave out unnecessary comments if they require maintenance and if you are unlikely to maintain them.*

## When to Write Comments

It is best to put your comments in the program as you are writing it. If you start your program with a set of heading comments, then you should have a pretty good idea what you are planning to do. It helps focus your thoughts.

Avoid the two-step process of coding and later going back and adding comments. This method has several problems. First, you are likely to forget what you did. What may be obvious when you write it may not be so obvious when you re-read it.

Another good reason to write comments while you're writing the code is psychological. When the code is done, you're probably going to feel that the program is done. Adding comments then becomes a chore to be completed as quickly as possible. Generally, this means you'll put in too few comments.

It is especially helpful to do things like screen layouts in comments before you start coding. That way you have a model to work from.

**Rule 2-7:**

*Comment your code as you write it.*



## Some Comments on Comments

The heading comments always seem a bit long to the person creating the program. To the person trying to maintain it, they always seem far too short. Balance is the key to good commenting. Make your comments short enough so they aren't bothersome to put in, yet long enough to give other programmers a good idea of what's going on.

Overly commented programs are rare. Usually they turn up in the work of eager first-year programming students.

Under-commented programs are far too frequent. Too many programmers think that their code is obvious. It is not.

There is a reason it is called "code."

# Chapter 1: Style and Program Organization

A program is a detailed set of instructions read by both a human and a machine. The computer reads only the code, while the human concentrates on the comments. Good style pertains to both parts of a program. Well-designed, well-written code not only makes effective use of the computer, it also contains carefully constructed comments to help humans understand it. Well-designed, well-written code is a joy to debug, maintain, and enhance.

Good programming style begins with the effective organization of code. Using a clear and consistent organization of the components of your program you make them more efficient, readable, and maintainable.

## Program Organization

Good computer programs are organized much like good books. This can be seen especially well with technical books, in which the structure is very clear.

People have been writing books for hundreds of years, and during that time they have discovered how to organize the material to efficiently present their ideas. Standards have emerged. For example, if I asked you when this book was copyrighted, you would turn to the title page. That's where the copyright notice is always located.

The same goes for code. In fact, we can make the parallels quite explicit.

Any technical book can be analyzed into standard components. So can a program. These components correspond quite closely as the following table shows.

Book	Program
Title Page	Heading
Table of Contents	Table of Contents
Chapter	Module
Section	Function
Paragraph	Conceptual Block
Sentence	Statement
Word	Variable
Index	Cross Reference
Glossary	Variable Declaration Comments

These components really do serve the same purposes.

- **Title Page**

A book's title page contains the name of the book, the author, and the publisher. On the reverse of the title page is the copyright page, where you find things like the printing history and Library of Congress information.

At the beginning of every well-documented program is a section known as the heading. It is, in effect, the title page of the program. The heading consists of a set of boxed comments that include the name of the program, the author, copyright, usage, and other important information. The heading comments are fully discussed in Chapter 2.

- **Table of Contents**

Every technical book has a table of contents. It lists the location of all the chapters and major headings, and serves as a road map to the rest of the book.

A program should have a table of contents as well, listing the location of each function. This is difficult and tedious to produce by hand, however it can be produced quite easily by a number of readily available tools, as discussed later in this chapter.

- **Chapters**

Technical books are divided into chapters, each one covering a single subject. Generally, each chapter in a technical book consists of a chunk of material that a reader can read in one sitting, although this is not a rule: Donald Knuth's highly regarded 624-page *Fundamental Algorithms* (Addison-Wesley, Reading, MA, 1968) contains only two chapters.

Similarly, a program is divided into modules, each a single file containing a set of functions designed to do some specific job. A short program may consist of just one module, while larger programs can contain 10, 20, or more. Module design is further discussed later in this chapter.

- **Sections**

Each chapter in a technical book is typically divided into several sections. A section covers a smaller body of information than a chapter. Sections in this book are identified by section heads in bold letters, making it easy for a reader to scan a chapter for a particular subject.

Just as a book chapter can contain several sections, a program module may contain several functions. A function is a set of instructions designed to perform a single focused task. A function should be short enough that a programmer can easily understand the entire function.

- **Index**

A technical book should have a good index that lists every important subject or keyword in the book and the pages on which it can be found. The index is extremely important in a technical book because it provides quick access to specific information.

A program of any length should have a cross reference, which lists the program variables and constants, along with the line numbers where they are used. A cross reference serves as an index for the program, aiding the programmer in finding variables and determining what they do. A cross reference can be generated automatically by one of the many cross reference tools, such as *xref*, *cref*, etc.

- **Glossary**

A glossary is particularly important in a technical book. Each technical profession has its own language, and this is especially true in computer programming (e.g., set COM1 to 1200,8,N, I to avoid PE and FE errors). A reader can turn to the glossary to find the mean-

ing of these special words. Every C program uses its own set of variables, constants, and functions. These names change from program to program, so a glossary is essential. Producing one by hand is impractical, but as you'll see later in this chapter, with a little help from some strategically placed comments, you can easily generate a glossary automatically.

**Rule 1-1:**

*Organize programs for readability, just as you would expect an author to organize a book.*

## Automatic Generation of Program Documentation

Some of the program components described above can be generated automatically. Consider the table of contents, for example. On UNIX systems, the *ctags* program will create such a table. Also, there is a public domain program, called *cpr*, that does the job for both DOS and UNIX.

A cross reference can also be generated automatically by one of the many cross reference tools, such as *xref*, *cref*, etc. However, you can also generate a cross reference one symbol at a time. Suppose you want to find out where *total-count* is located. The command *grep* searches files for a string, so typing:

```
grep -n total_count *.c
```

produces a list of every use of *total\_count* in all the C files. (The *-n* tells *grep* to print line numbers.)

The command *grep* is available both on UNIX systems and in MS-Windows with Borland C++ and Borland's Turbo-C.

Also in UNIX, the command:

```
vi `grep -l total_count *.c`
```

invokes the *vi* editor to list the files that contain the word *total\_count*. Then you can use the *vi* search command to locate *total\_count* within a file. The commands *next* (*:next*) and *rewind* (*:rew*) will flip through the files. See your *vi* and UNIX manuals for more details.

Borland C++ and Borland's Turbo-C++ have a version of *grep* built in to the Integrated Develop Environment (IDE). By using the command Alt-Space you can bring up the tools menu, then select *grep* and give it a command line, and the program will generate a list of references in the message window. The file corresponding to the current message window line is displayed in the edit window. Going up or down in the message changes the edit window. With these commands, you can quickly locate every place a variable is used.

You can also partially automate the process of building a glossary, which is a time-consuming task if performed entirely by hand. The trick is to put a descriptive comment after each variable declaration. That way, when the maintenance programmer wants to know what *total\_count* means, all he or she has to do is look up the first time *total\_count* is mentioned in the cross reference, locate that line in the program, and read:

```
int total_count; /* total number of items in all classes */
```

So we have a variable (`total_count`) and its definition: “Total number of items in all classes” — in other words, a glossary entry.

## Module Design

A module is a set of functions that perform related operations. A simple program consists of one file; i.e., one module. More complex programs are built of several modules.

Modules have two parts: the public interface, which gives a user all the information necessary to use the module; and the private section, which actually does the work.

Another analogy to books is helpful here. Consider the documentation for a piece of equipment like a laser printer. This typically consists of two manuals: the Operator's Guide and the Technical Reference Manual.

The Operator's Guide describes how to use the laser printer. It includes information like what the control panel looks like, how to put in paper, and how to change the toner. It does not cover *how* the printer works.

A user does not need to know what goes on under the covers. As long as the printer does its job, it doesn't matter how it does it. When the printer stops working, the operator calls in a technician, who uses the information in the Technical Reference Manual to make repairs. This manual describes how to disassemble the machine, test the internal components, and replace broken parts.

The public interface of a module is like an Operator's Guide. It tells the programmer and the computer how to use the module. The public interface of a module is called the “header file.” It contains data structures, function definitions, and **#define** constants, which are needed by anyone using the module. The header file also contains a set of comments that tells a programmer how to use the module.

The private section, the actual code for the module, resides in the *c* file. A programmer who uses the module never needs to look into this file. Some commercial products even distribute their modules in object form only, so *nobody* can look in the private section.

### **Rule 1-2:**

*Divide each module up into a public part (what's needed to use the module) and a private part (what's needed to get the job done). The public part goes into a .h file while the private part goes into a .c file.*

## Libraries and Other Module Groupings

A library is a collection of generally useful modules combined into a special object file.

Libraries present a special problem: How do you present the public information for a library? Do you use a single header file, multiple header files for the individual modules, or some other method?

There is no one answer. Each method has its advantages and disadvantages.

## Multiple header files

Because a library is a collection of modules, you could use a collection of header files to interface with the outside world. The advantage to this is that a program brings in only the function and data definitions it needs, and leaves out what it doesn't use.

The X Windows system, for example, has a different header file for each module (called a tool kit in X-language).

A typical X Windows program contains code that looks like this:

```
#include <X11/Intrinsic.h>
#include <X11/Shell.h>
#include <Xm/Xm.h>
#include <Xm/Label.h>
#include <Xm/RowColumn.h>
#include <Xm/PushButton.h>
#include <Xm/Separator.h>
#include <Xm/BulletinB.h>
#include <Xm/CascadeB.h>
```

As you can see, this can result in a lot of **#includes**. One of the problems with this system is that it is very easy to forget one of the **#include** statements. Also, it is possible to have redundant **#includes**. For example, suppose the header file *XmILabel.h* requires *XmISeparator.h* and contains an internal **#include** for it, but the program itself also includes it. In this case, the file is included twice, which makes extra, unnecessary work for the compiler.

Also, it is very easy to forget which include files are needed and which to leave out. I've often had to go through a cycle of compile and get errors, figure out which include file is missing, and compile again.

Therefore, the advantages of being compact must be balanced against the disadvantages of being complex and difficult to use.

## One header does all

One way of avoiding the problems of multiple header files is to throw everything into a single, big header file. Microsoft Windows uses this approach. A typical Windows program contains the line:

```
#include <windows.h>
```

This is much simpler than the multiple include file approach taken by X Windows System. Also, there is no problem with loading a header file twice because there is only one file and only one **#include** statement.

The problem is that this file is 3,500 lines long, so even short 10-line modules bring in 3,500 lines of include file. This makes compilation slower. Borland and Microsoft have tried to get around this problem by introducing "precompiled" headers, but it still takes time to compile Windows programs.

## Mixed approach

Borland's Turbo Vision library (TV) uses a different method. The programmer puts **#define** statements in the code to tell the TV header which functions will be used. This is followed by one **#include** directive.

```
#define Uses_TRect
#define Uses_TStatusLine
#define Uses_TStatusDef
#define Uses_TStatusItem
#include <tv.h>
```

The file *tv.h* brings in additional include files as needed. (The **#defines** determine what is needed.) One advantage over multiple include files is that the files are included in the proper order, which eliminates redundant includes.

This system has another advantage in that only the data that's needed is brought in, so compilation is faster. The disadvantage is that if you forget to put in the correct **#define** statements, your program won't compile. So while being faster than the all-in-one strategy, it is somewhat more complex.

## Program Aesthetics

A properly designed program is easy to read and understand.

Part of what makes books readable is good paragraphing. Books are broken up into paragraphs and sentences. A sentence forms one complete thought, and multiple sentences on a single subject form a paragraph.

### Code paragraphs

Similarly, a C program consists of statements, and multiple statements on the same subject form a conceptual block. Since “conceptual block” is not a recognized technical term, you may just as well call them paragraphs. In this book, paragraphs are separated from each other by a blank line. You can separate paragraphs in C in the same way.

Omitting paragraphs in code creates ugly, hard-to-read programs. If you've ever tried reading a paper without paragraphing, you realize how easy it is to get lost. Paragraph-less programming tends to cause the program to get lost:

```
/* Poor programming style */
void display(void)
{
    int start, finish; /* Start, End of display range */
    char line[80]:     /* Input line for events */
    printf("Event numbers? ");
    start = -1;
    finish = -1;
    fgets(line, sizeof(line), stdin);
    sscanf(line, "%d %d", &start, &finish);
    if (start == -1)
        return;
    if (!valid(finish))
        finish = start;
    if (valid(start))
        display2(start, finish);
}
```

Now, see how much better the same code looks after adding some whitespace to separate the function into areas:



```
/* good programming style
void display(void)
{
    int start, finish; /* Start, End of display range */
    char line[80]:     /* Input line for events */

    printf("Event numbers ? ");
    start = -1;
    finish = -1;

    fgets(line, sizeof(line), stdin);
    sscanf(line, "%d %d", &start, &finish);

    if (start == -1)
        return;

    if (!valid(finish))
        finish = start;

    if (valid(start))
        display2(start, finish);
}
```

Note that the paragraphs here are not defined by the syntax of the language, but by the semantics of the program. Statements are grouped together if they belong together logically. That judgement is made by the programmer.

***Rule 1-3:***

*Use white space to break a function into paragraphs.*

## Statements

Good paragraphing improves the aesthetics, hence the readability, of a program. But there are also aesthetic issues at the level of the sentence; or in C, the statement. A statement expresses a single thought, idea, or operation. Putting each statement on a line by itself makes the statement stand out and reserves the use of indentations for showing program structure.

```
/* Avoid this style of programming */
void dump_regs()
{
    {int d_reg_index;for(d_reg_index=0;d_reg_index<7
      d_reg_index++)printf("d%d 0x%x\n",
        d_reg_index, d_reg[d_reg_index]);}
    {int a_reg_index;for(a_reg_index=0;a_reg_index<7
      a_reg_index++)printf("a%d 0x%x\n",
        a_reg_index, a_reg[a_reg_index]);}
}
```

Figuring out this code is like extracting a fossil from a rock formation. You must take out your hammer and chip at it again and again until something coherent emerges. This kind of programming obscures the control flow of the program. It hides statement beginnings and endings and provides no paragraph separations.

Simply reformatting this code gives us a clearer understanding of what it does.

```
/* Better style */
void dump_regs()
{
    {
        int d_reg_index = 0; /* Data register index */

        for (d_reg_index = 0;
             d_reg_index < 7;
             ++d_reg_index)
            printf("d%d 0x%x\n",
                  d_reg_index, d_reg[d_reg_index]);
    }
    {
        int a_reg_index; /* Index of the address reg */

        for (a_reg_index = 0;
             a_reg_index < 7;
             ++a_reg_index)
            printf("a%d 0x%x\n",
                  a_reg_index, a_reg[a_reg_index]);
    }
}
```

(Better yet, add comments after the `d_reg_index` and `a_reg_index` declarations to explain the variables.)

**Rule 1-4:**

*Put each statement on a line by itself*

In clearly written English there are limits on the optimum length of a sentence. We've all suffered through the sentence that runs on and on, repeating itself over and over; or, through a structure whose complexity demonstrates more the confusion than the cleverness of the author (although it should be noted that, as in the present example, a demonstration of confusion can be the whole point), just get all bollixed up.

Likewise, a clearly written C statement should not go on forever. Complex statements can easily be divided into smaller, more concise statements. For example:

```
/* Poor practice */
ratio = (load * stress - safety_margin -
        fudge_factor) / (length * width * depth -
        shrinkage);

/* Better */
top = (load * stress - safety_margin - fudge_factor);
bottom = (length * width * depth - shrinkage);

ratio = top / bottom;
```

**Rule 1-5:**

*Avoid very long statements. Use multiple shorter statements instead.*

# Chapter 9: Rules

## Chapter 1: Style and Program Organization

### **Rule 1-1:**

*Organize programs for readability, just as you would expect an author to organize a book.*

### **Rule 1-2:**

*Divide each module up into a public part (what's needed to use the module) and a private part (what's needed to get the job done). The public part goes into a .h file while the private part goes into a .c file.*

### **Rule 1-3:**

*Use white space to break a function into paragraphs.*

### **Rule 1-4:**

*Put each statement on a line by itself*

### **Rule 1-5:**

*Avoid very long statements. Use multiple shorter statements instead.*

## Chapter 2: File Basics, Comments, and Program Headings

### **Rule 2-1:**

*Keep program files to no longer than about 2,000 to 3,000 lines.*

### **Rule 2-2:**

*Keep all lines in your program files down to 72 characters or fewer.*

### **Rule 2-3:**

*Use 8-character tab stops.*

### **Rule 2-4:**

*Use only the 95 standard ASCII characters in your programs. Avoid exotic characters. (Foreign characters may be used if you are writing comments in a foreign language.)*

### **Rule 2-5:**

*Include a heading comment at the beginning of each file that explains the file.*

**Rule 2-6:**

*Leave out unnecessary comments if they require maintenance and if you are unlikely to maintain them.*

**Rule 2-7:**

*Comment your code as you write it.*

**Chapter 3: Variable Names****Rule 3-1:**

*Use simple, descriptive variable names.*

**Rule 3-2:**

*Good variable names are created by using one word or by putting two or three words together, separated by “\_”. For example:*

**Rule 3-3:**

*Never use I (lowercase l) or O (uppercase O) as variable or constant names.*

**Rule 3-4:**

*Don't use the names of existing C library functions or constants.*

**Rule 3-5:**

*Don't use variable names that differ by only one or two characters. Make every name obviously different from every other name.*

**Rule 3-6:**

*Use similar names for variables that perform similar functions.*

**Rule 3-7:**

*When creating a two word variable name where the words can be put in any order, always put the more important word first.*

**Rule 3-8:**

*Standard prefixes and suffixes are \_ptr, \_p, \_file, \_fd, and n\_.*

**Rule 3-9:**

*Short names such as x, y, and i are acceptable when their meaning is clear and when a longer name would not add information or clarity.*

**Rule 3-10:**

*Use `argc` for the number of command line arguments and `argv` for the argument list. Do not use these names for anything else.*

**Rule 3-11:**

*Follow every variable declaration with a comment that defines it.*

**Rule 3-12:**

*Whenever possible, include the units of measure in the description of a variable.*

**Rule 3-13:**

*Name and comment each field in a structure or union like a variable.*

**Rule 3-14:**

*Begin each structure or union definition with a multi-line comment describing it.*

**Rule 3-15:**

*Put at least one blank line before and after a structure or union definition.*

**Rule 3-16:**

*When you can't put a descriptive comment at the end of a variable declaration, put it on a separate line above. Use blank lines to separate the declaration/comment pair from the rest of the code.*

**Rule 3-17:**

*Group similar variables together. When possible, use the same structure for each group.*

**Rule 3-18:**

*Don't use hidden variables.*

**Rule 3-19:**

*Use the names `INT16`, `INT32`, `UINT16`, and `UINT32` for portable application*

**Rule 3-20:**

*Floating-point numbers must have at least one digit on either side of the decimal point.*

**Rule 3-21:**

*The exponent in a floating-point number must be a lowercase `e`. This is always followed by a sign.*

**Rule 3-22:**

*Start hexadecimal numbers with 0x. (Lowercase x only.)*

**Rule 3-23:**

*Use uppercase A through F when constructing hexadecimal constants.*

**Rule 3-24:**

*Long constants should end with an uppercase L.*

**Chapter 4:Statement Formatting****Rule 4-1:**

*Write one statement per line.*

**Rule 4-2:**

*Put spaces before and after each arithmetic operator, just like you put spaces between words when you write.*

**Rule 4-3:**

*Change a long, complex statement into several smaller, simpler statements.*

**Rule 4-4:**

*In a statement that consists of two or more lines, every line except the first must be indented an extra level to indicate that it is a continuation of the first line.*

**Rule 4-5:**

*When writing multi-line statements, put the arithmetic and logical operators at the end of each line.*

**Rule 4-6:**

*When breaking up a line, the preferred split point is where the parenthetic nesting is lowest.*

**Rule 4-7:**

*Align like level parentheses vertically.*

**Rule 4-8:**

*Split long **for** statements along statement boundaries.*

**Rule 4-9:**

*Always split a **for** statement into three lines.*

**Rule 4-10:**

Write **switch** statements on a single line.

**Rule 4-11:**

Keep conditionals on a single line if possible.

**Rule 4-12:**

When splitting a conditional clause (**? :**), write it on three lines: the condition line, the true-value line, and the false-value line. Indent the second and third line an extra level.

**Rule 4-13:**

Avoid side effects.

**Rule 4-14:**

Put the operator **++** and **--** on lines by themselves. Do not use **++** and **--** inside other statements.

**Rule 4-15:**

Never put an assignment statement inside any other statement.

**Rule 4-16:**

If putting two or more statements on a single line improves program clarity, then do so.

**Rule 4-17:**

When using more than one statement per line, organize the statement into columns.

**Rule 4-18:**

Indent one level for each new level of logic.

**Rule 4-19:**

The best indentation size is four spaces.

## Chapter 5:Statement Details

**Rule 5-1:**

Always put a comment in the null statement, even if it is only

**Rule 5-2:**

In C expressions, you can assume that **\***, **/**, and **%** come before **+** and **-**. Put



*parentheses around everything else.*

**Rule 5-3:**

*Use ANSI style function declarations whenever possible.*

**Rule 5-4:**

*When using K&R parameters, declare a type for every parameter.*

**Rule 5-5:**

*When using K&R parameters, put the type declarations for the parameters in the same order as they occur in the function header.*

**Rule 5-6:**

*Always declare a function type*

**Rule 5-7:**

*Always declare functions that do not return a value as **void**.*

**Rule 5-8:**

*Allow no more than five parameters to a function.*

**Rule 5-9:**

*Avoid using global variables where function parameters will do.*

**Rule 5-10:**

*Avoid variable length parameter lists. They are difficult to program and can easily cause trouble.*

**Rule 5-11:**

*When an if affects more than one line, enclose the target in braces.*

**Rule 5-12:**

*In an if chain, treat the words **else if** as one keyword.*

**Rule 5-13:**

*Never use the comma operator when you can use braces instead.*

**Rule 5-14:**

*When looping forever, use `while (1)` instead of `for(;;)`.*

**Rule 5-15:**

*Avoid using **do/while**. Use **while** and **break** instead.*

**Rule 5-16:**

*Use the comma operator inside a for statement only to put together two statements. Never use it to combine three statements.*

**Rule 5-17:**

*Use one printf per line of output.*

**Rule 5-18:**

*Unless extreme efficiency is warranted, use printf instead of puts and putc.*

**Rule 5-19:**

*Start **goto** labels in the first column.*

**Rule 5-20:**

*End every case in a **switch** with a **break** or the comment `/* Fall Through */`*

**Rule 5-21:**

*Always put a break at the end of the last case in a switch statement.*

**Rule 5-22:**

*Always include a **default** case in every **switch**, even if it consists of nothing but a null statement.*

## Chapter 6:Preprocessor

**Rule 6-1:**

***#define** constants are declared like variables. Always put a comment describes the constant after each declaration.*

**Rule 6-2:**

*Constant names are all upper-case.*

**Rule 6-3:**

*If the value of a constant is anything other than a single number, enclose it in parentheses.*

**Rule 6-4:**

*The use of **const** is preferred over **#define** for specifying constants.*

**Rule 6-5:**

*When possible, use **typedef** instead of **#define**.*

**Rule 6-6:**

*Don't use **#define** to define new language elements.*

**Rule 6-7:**

*Never use **#define** to redefine C keywords or standard functions.*

**Rule 6-8:**

*Enclose parameterized macros in parentheses.*

**Rule 6-9:**

*Enclose each argument to a parameterized macro in parenthesis.*

**Rule 6-10:**

*Always enclose macros that define multiple C statements in braces.*

**Rule 6-11:**

*If a macro contains more than one statement, use a do/while structure to enclose the macro. (Don't forget to leave out the semicolon of the statement).*

**Rule 6-12:**

*When creating multi-line macros, align the backslash continuation characters (\) in a column.*

**Rule 6-13:**

*Always comment any parameterized macros that look like functions.*

**Rule 6-14:**

***#include** directives come just after the heading comments. Put system includes first, followed by local includes.*

**Rule 6-15:**

*Do not use absolute paths in **#include** directives. Let the **-I** compile opt*

**Rule 6-16:**

*Comment **#else** and **#endif** directives with the symbol used in the initial **#ifdef** or **#endif** directive.*

**Rule 6-17:**

*Use conditional compilation sparingly. Don't let the conditionals obscure the code.*

**Rule 6-18:**

*Define (or undefine) conditional compilation control symbols in the code rather than using the `-D` option to the compiler.*

**Rule 6-19:**

*Put `#define` and `#undef` statements for compilation control symbols at the beginning of the program.*

**Rule 6-20:**

*Do not comment out code. Use conditional compilation (`#ifdef UNDEF`) to get rid of unwanted code.*

**Rule 6-21:**

*Use `#ifdef QQQ` to temporarily eliminate code during debugging.*

## Chapter 7:Directory Organization and Makefile Style

**Rule 7-1:**

*Whenever possible, put all the files for one program or library in one directory.*

## Chapter 8:User-Friendly Programming

**Rule 8-1:**

*Law of Least Astonishment: The program should act in a way that least astonishes the user.*

**Rule 8-2:**

*Begin each error message with `Error:.` Begin each warning message with `Warning:.`*

**Rule 8-3:**

*Don't let users do something stupid without warning them.*

## Chapter 9:Rules